

Building future skills

A tafe infrastructure plan for the Gold Coast



Copyright

This publication is protected by the Copyright Act 1968.

© State of Queensland, November 2019.



Licence

This work is licensed by the Department of Employment, Small Business and Training under the Creative Commons Attribution (CC BY) 4.0 International licence.

To view a copy of this licence, visit: <https://creativecommons.org/licenses/by/4.0/>

You are free to copy, communicate and adapt this publication, as long as you attribute appropriately, including:

- the name of the publication “Building future skills – A tafe infrastructure plan for the Gold Coast”
- a link to the work if you have sourced it online
- the copyright licence statement above
- indicate if you have made changes to the work.

Minister's message



A key strength of Queensland's vocational education and training system is its commitment to giving students practical, hands-on skills developed in part, in purpose-built training facilities that mirror real world workplaces.

Investing in the delivery of high-quality training supported by a network of fit-for-purpose training infrastructure is essential to ensure Queenslanders have the skills they need to secure a job and progress their careers in our state's growing industries.

For our students, having access to state-of-the-art training facilities and equipment will ensure they are job ready. For our teachers and trainers, it will provide them with contemporary training spaces to ensure training delivery meets industry needs.

Across Queensland there are currently 77 sites owned or leased by the State Government and the public training providers for the delivery of vocational education and training.

This includes the network of TAFE Queensland and Central Queensland University campuses as well as sites utilised by the state's other public providers of training.

The Queensland Government has released the *"Skills for Queensland – Great training for quality jobs"* plan to secure our future prosperity through a skilled and adaptive workforce. More innovative and flexible training opportunities will give Queenslanders better access to skilling, reskilling and upskilling pathways to remain agile as jobs evolve.

The Government will invest more than \$105 million during 2019-20, in projects across Queensland as part of the long-term plan to revitalise the state's training portfolio. To complement this program, over the next few years we have significant investments planned for the modernisation of Pimlico, Cairns, Mount Gravatt, Toowoomba, Alexandra Hills and the Ashmore and Southport sites at the Gold Coast.

As we deliver on this investment, we also need to plan for the training needs of all Queensland communities to ensure our investment in training facilities is going where it is needed and we are ready to support training delivery into the future.

This has led to the development of 14 regional plans that outline the Queensland Government's proposed investment in training infrastructure as well as strategies to provide access to relevant training spaces to meet local industry and community needs.

For the Gold Coast region, this plan outlines the future for seven TAFE sites, and considered opportunities to expand delivery to accessible, industry-relevant locations.

Central to this planning, is ensuring our training infrastructure can readily adapt to changing technology and industry advancements and complement a range of delivery options such as online learning and workplace-based training.

This plan outlines how we intend to provide the Gold Coast region with the training infrastructure it needs to skill its workforce for the future.

The Honourable Shannon Fentiman MP

Minister for Employment and Small Business

Minister for Training and Skills Development

Advancing Queensland's training infrastructure

Our current training footprint

Across the state, training is currently delivered from a range of training spaces including:

- state-owned training infrastructure
- leased, purpose-built training facilities
- workplaces
- trade training centres and other facilities shared with state and non-state secondary schools
- shared facilities with universities (such as QUT Caboolture and the University of the Sunshine Coast)
- shared facilities with industry (such as Queensland Rail's training facility at Acacia Ridge).

TAFE Queensland and Central Queensland University are the primary users of the state's training infrastructure alongside Queensland's other public training providers Aviation Australia and the Aboriginal Centre for the Performing Arts.

Within the 77 training sites owned or leased by the Queensland Government, there are four types of training facilities:

- a full campus: may offer trade and/or nontrade training and provides a full range of services including a customer services centre, library and canteen.
- training centre: may offer trade and/or nontrade training as well some services such as a customer service centre.
- specialised training centre: offers training for a specific industry or skill area (i.e. trades) from a full campus or training centre.
- learning hubs: a small training space generally co-located with other services (i.e. high school) or on leased premises.

Planning for the future

In 2019-20, the Government is committed to investing over \$105 million in infrastructure projects across Queensland as part of the long-term plan to revitalise the state's training portfolio.

From 2018 to 2021, significant investments will be made to modernise the Pimlico, Cairns, Mount Gravatt and Toowoomba training sites, and training infrastructure within the regions of the Gold Coast and Redlands.

While there have been periods of significant investment in the state's training infrastructure over the years, the majority of the state-owned facilities are decades old and were designed to meet the training needs at the time of construction. For some facilities, their age, location and changes in industry skills needs, have meant that they are no longer fit-for-purpose.

This regional infrastructure planning process is working to prepare the state's training facilities for future training needs, particularly in areas of projected population or employment growth and to respond to changing skills needs of industry. This includes ensuring infrastructure upgrades incorporate projected climate change data and take into account the skills and training needs as a result of global trends such as digital innovation, shifting markets, and the transition to a low carbon economy, which will significantly impact Queensland industries and employment.

TAFE Queensland currently occupy forty of the forty-seven State-owned sites. A number of these are earmarked to undergo master planning in the next few years to determine investment opportunities.

Gold Coast regional overview

The Gold Coast is Australia's sixth largest city by population and a key employment, health, and transport hub within southern South East Queensland¹.

Between 2016 and 2026, population and employment in the region is projected to grow significantly².

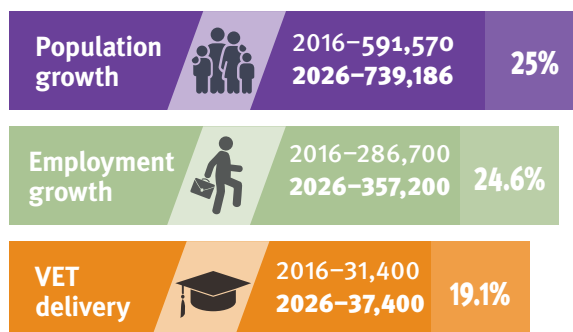
The Jobs Queensland Anticipating Future Skills³ project forecasts that the largest employment changes to occur in the Gold Coast region by 2022 will be in the following industries:

- health care and social assistance
- professional, scientific and technical services
- retail trade
- accommodation and hospitality
- construction.

Employment in education and training is also projected to experience notable growth.

The Gold Coast region receives approximately 12 million visitors each year and is currently experiencing strong population growth. The economy is changing from being predominantly tourism and construction based to encompassing industries such as health, information technology and advanced manufacturing.

The impact of digital technologies and involvement in global value chains are driving changes in workforce composition and skills throughout Queensland including on the Gold Coast, triggering a transition to a knowledge and services based economy. While mining remains one of the biggest economic contributors in the state in terms of output, service industries such as construction, health care and social assistance now contribute almost as much—and the workforce of the future will require higher levels of skills and different skill sets⁴.



Sources: QGSO population projections 2018 edition (medium series); Queensland Treasury employment projections 2016 (medium series) place of work – data sets adjusted to align with this region; State Training Agency Clearinghouse (STAC) Database 2017

Recognised as a major tourism hub, employment in the Gold Coast region is focused on the retail trade, accommodation and food services, and education and training industries. However, employment in health care and social assistance, construction, and professional, technical and scientific services is also significant⁵.

Significant projects likely to affect the region's short to medium term economic outlook and job opportunities are⁶:

- new police facility at Arundel – \$11.5 million
- additional classrooms and new schools – \$130.9 million
- expanding and improving social housing in the region – \$38.4 million
- Gold Coast Parklands Health and Knowledge Precinct – \$29.4 million
- Gold Coast Light Rail Stage 3A
- Gold Coast Recreation Centre at Tallebudgera – \$7.9 million
- Pacific Motorway upgrades – \$197.5 million
- Robina Hospital upgrades – \$11.1 million.

1 Reporting within this document for the Gold Coast region is based on the following Statistical Area 4 (SA4) regions: Broadbeach – Burleigh, Coolangatta, Gold Coast – North, Gold Coast Hinterland, Mudgeeraba – Tallebudgera, Nerang, Ormeau – Oxenford, Robina, Southport, SurfersParadise.

2 QGSO population projections 2018 (medium series), Queensland Treasury employment projections 2016 (medium series) place of work – data sets adjusted to align with this region, data sets were adjusted to align with this TAFE planning region.

3 Jobs Queensland reporting is based on the Gold Coast SA4 region.

4 Jobs Queensland: The Future of Work in Queensland to 2030 Discussion Paper – 2019

5 Jobs Queensland: Anticipating Future Skills: Jobs growth and alternative futures for Queensland to 2022

6 Sourced from Regional Action Plans (Queensland Budget 2018-19) and State Infrastructure Plan (Part B: Program – 2018 update)

Training infrastructure on the Gold Coast

The Gold Coast region encompasses seven TAFE Queensland sites at Coomera, Coomera Marine, Ashmore, Southport (including the Southport Hospitality Hub), Coolangatta, and a vacant site at Ridgeway Avenue, Southport (referred to in this report as the Ridgeway site).

Coomera TAFE is a creative hub offering a range of courses including building design, graphic design, interactive digital media, IT, interior design, music, photography, and screen and media.

Coomera Marine specialises in maritime construction related courses.

Southport TAFE caters for a variety of non-trade qualifications including nursing and allied health professions, sport and fitness, animal care, business, child care, community services, general education, hairdressing and beauty, and retail.

Southport Hospitality Hub, a leased premises, is a contemporary training restaurant for hospitality and cookery.

Ashmore TAFE is the region's specialist trade training facility with study areas including construction, electro-technology and utilities, automotive, engineering and horticulture.

Coolangatta TAFE is a small training facility specialised training centre which offers a range of English programs.

Ridgeway is a vacant site and is no longer used for training delivery.

Student enrolments in training across the region has seen general education and training remain high between 2015-16 and 2017-18 with significant increases in health, community services, primary industry, utilities, construction and engineering sectors over the same period.

Enrolments are projected to increase significantly over the 10 years to 2027 in both trades and non-trade areas.



This map is intended for general reference use only



Coomera and Coomera Marine

The Coomera TAFE campus is a full campus located in a rapidly growing area known as the Pimpama- Coomera corridor, near the Dreamworld theme park. The facility is relatively new, opening in 2011 and specialising in training and skills in creative technology and media. TAFE Queensland's partnership with the University of Canberra sees degree programs delivered from this campus.

The Coomera TAFE campus occupies only a small portion of the site, with the remaining portion being undeveloped land.

The Coomera Marine facility is leased and has doubled enrolments over the last three years. It offers courses in marine related studies and is well located and generally fit for purpose.

TAFE Queensland's partnership with boat builder Rivera provides students with real world exposure to working in the marine industry.



Future outlook

The Coomera TAFE campus is well placed to service the projected population and employment growth in the region, with the growth of Coomera Town Centre and nearby Pimpama expected to create increased training and employment opportunities.

To cater for this growth, the Coomera TAFE campus is expected to expand its footprint to provide for growth areas such as allied health. The remaining undeveloped land could be re-used for government, particularly with its proximity to public transport, and any funds obtained reinvested into the region.

There is an opportunity to develop additional partnerships with external groups and industry to support the expected growth in the region and campus.

The Coomera TAFE campus is a relatively new and modern facility, and therefore investment is required only for maintenance to ensure modern standards are upheld.

At the Coomera Marine site, there is limited room for expansion and options that support the projected growth in the medium to long term are being considered.

As the Coomera Marine site is leased, there are no associated maintenance or capital costs, however continued investment will be required to ensure equipment remains at industry standard.

Infrastructure plan:

Coomera and Coomera Marine

- The Coomera TAFE campus is a relatively new and modern facility, and therefore investment is only required to maintain the facility at this standard, with a budget of approximately \$770,000 over the next two years.
- The Coomera Marine site is leased by TAFE Queensland who will continue to invest in the site to ensure equipment remains at an industry standard.

Southport and Southport Hospitality Hub

Located within the Southport CBD, the Southport TAFE campus is the largest facility in the region and its enrolments have grown considerably over the last three years—particularly in community services, health, and general education and training.

The campus is well placed to service any increase in demand for training delivery in the region.

Given the site's age and history—it was a former shopping centre—it requires refurbishment and upgrades to facilities to take advantage of technological advances, changing training delivery practices and to meet the expectations of students and employers.

More than \$1.6 million was invested in the site over the last two years for capital and maintenance programs. The works included building and system upgrades, as well as the modernisation of facilities.

The Southport Hospitality Hub is also located in nearby leased premises. This site delivers cookery and hospitality training.



Future outlook

The Southport TAFE CBD campus is well located, generally fit-for-purpose and appropriate to delivering training to meet current and projected enrolment growth.

In the short term, investment will be made to relocate administration and displaced General Learning Areas to vacant areas at Southport, and to consolidate and expand Nursing and Allied Health.

A regional master plan has been developed to determine investment opportunities in the Gold Coast region. As a result, capital and maintenance funding to the value of approximately \$10.7 million will be invested at the site in 2019-20 and 2020-21.

Continued investment will be required in the commercial kitchen to ensure equipment remains at industry standard. The leased Southport Hospitality Hub will be maintained, however an alternative long-term plan is needed for an increase in hospitality students.

The site is close to the Gold Coast University Hospital and there are opportunities to partner with Gold Coast Hospital and Health Services and Griffith University to advance health related research, education and training—similar to existing partnerships at the Sunshine Coast Hospital Institute.

Infrastructure plan: Southport

- Approximately \$10 million is budgeted for capital projects over the next two years for modernisation of training facilities and building upgrades.
- Approximately \$600,000 is budgeted over the next two years for standard maintenance works.
- The Southport Hospitality Hub is leased by TAFE Queensland and therefore continued investment will be required to ensure equipment remains at industry standard.

Ashmore

The Ashmore TAFE facility is the dedicated trades training facility for the region and has seen an overall increase in enrolments over the last 3 years. The increases in demand have been in construction related trades as well as electro-technology, refrigeration, renewable energies and data and communications.

The facilities were previously leased for Gold Coast 2018 Commonwealth Games Corporation (GOLDOC) headquarters in the lead up to the 2018 Games.

Through its TAFE at School program, TAFE Queensland partners with Queensland schools to deliver certificate I to III courses. This includes partnerships with local Gold Coast schools at the Ashmore TAFE campus.

Over the last two years, approximately \$3.6 million was invested in general maintenance and capital works to upgrade trade related structures and building systems, including \$1.5 million in 2018-19 to refit Level 2 of D Block for electrical trades training.



Future outlook

The campus is strategically placed for the ongoing delivery of trade training for the region. The region will be subject to major projects over the next 10 years, which are likely to increase the demand for trade training at the site.

Investments at Ashmore will include improving and expanding construction trades, developing a new trades training building, and creating a student learning and services hub.

These capital works are budgeted at approximately \$23.7 million over the next two years.

An additional \$800,000 is budgeted for further maintenance works over the next two years.

Further investment is needed to accommodate future demand for trade training and to address ageing facilities, with TAFE Gold Coast administration moving into the former GOLDOC headquarters.

There is an opportunity to develop additional partnerships with external groups, particularly trade industry groups to support the expected growth in the region and campus.

Infrastructure plan:

Ashmore

- Approximately \$23.7 million is budgeted for capital projects over the next two years for modernisation of training facilities and substantial building upgrades to trade training facilities.
- Approximately \$800,000 is budgeted for maintenance works over the coming two years.
- Further investment is needed to accommodate future growth in demand for trade training and to address ageing facilities, with TAFE Queensland Gold Coast administration moving in to the former GOLDOC headquarters.

Coolangatta

The Coolangatta TAFE campus specialises in general education and training with a focus on the English language and literary and numeracy skills.

TAFE Queensland is the Adult Migrant English Program (AMEP) service provider, a federal government initiative, and exclusively delivers the program for Queensland including from the Coolangatta campus.

Approximately \$140,000 was invested in general maintenance and holding costs over the last two years.



Future outlook

Due to poor location, ageing condition and inflexible facilities the Coolangatta TAFE campus will continue to be limited to providing training for general education, English language, and literary and numeracy skills.

In the short term, the Coolangatta campus will be maintained and therefore investment is required only for maintenance to ensure modern standards are upheld, with another \$200,000 budgeted over the next two years.

In the long term, the site may be consolidated with a new or existing campus in the southern portion of the Gold Coast.

Infrastructure plan: Coolangatta

- \$200,000 budgeted for standard maintenance and capital works over the coming two years.
- Short term, the Coolangatta campus will be maintained and therefore investment is required only for maintenance in order to ensure modern teaching standards are upheld.
- In the long term, the site may be consolidated with a new or existing campus in the southern portion of the Gold Coast.

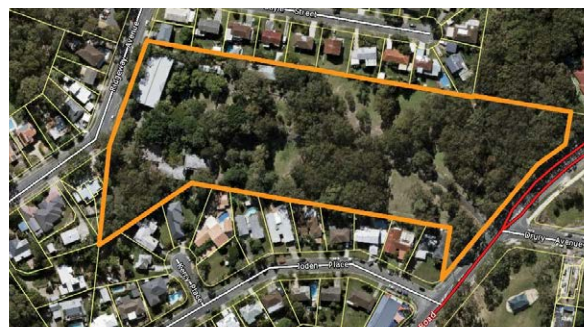
Ridgeway

The Ridgeway site was vacated in 2009 as facilities were no longer fit for purpose, not well serviced by public transport, and trade and non-trade training needs were met by nearby Ashmore and Southport campuses.

The site is available for alternative uses. There is some interest from independent education providers in the site for schooling purposes.

Any funds realised from a transfer or long term lease will be re-invested into the training portfolio at sites in the Gold Coast region.

It incurs an average of \$550,000 per annum in holding costs.



Infrastructure plan: Ridgeway

- The site is not used for training delivery in the region.
- The site incurs up to \$550,000 annually in holding costs.

Gold Coast training infrastructure plan

The Gold Coast region is a significant growth area will receive considerable investment for revitalisation projects over the next 2 years. This includes targeted investment at the TAFE Queensland sites at Ashmore, Coomera and Southport.

The vacant Ridgeway site is no longer suitable for training delivery and is available for transfer and government re-use.

Any funds realised from a transfer will be reinvested to the training portfolio in the region to upgrade training facilities and infrastructure.

Other government initiatives will also be considered for the region to expand the social infrastructure available to the local community.

A new non-trades campus in the Varsity/Robina area is to be considered to service the expected population, business and training growth for the southern portion of the Gold Coast region.

Summary of planned actions

All campuses, with the exception of the Ridgeway site, will maintain their current training emphasis.

Coomera and Coomera Marine

- The Coomera TAFE campus is a relatively new and modern facility, and therefore investment is only required to maintain the facility at this standard, with a budget of approximately \$770,000 over the next two financial years.
- The Coomera Marine site is leased by TAFE Queensland who will continue to invest in the site to ensure equipment remains at an industry standard.

Southport and Southport Hospitality Hub

- Almost \$11 million will be invested in capital improvements maintenance at the site in the next two years for modernisation of training facilities and building upgrades.
- The Southport Hospitality Hub is leased by TAFE Queensland and therefore continued investment will be required to ensure equipment remains at industry standard.

Ashmore

- Over \$23.7 million is budgeted for capital projects over the next two years for modernisation of training facilities and substantial building upgrades to trade training facilities.
- Approximately \$800,000 is budgeted for maintenance works over the coming two years.
- Further investment is needed to accommodate future growth in demand for trade training and to address ageing facilities, with TAFE Gold Coast administration moving in to the former GOLDOC headquarters.

Coolangatta

- \$200,000 is budgeted for standard maintenance and capital works over the coming two years.
- Short term, the Coolangatta campus will be maintained and therefore investment is required only for maintenance in order to ensure modern teaching standards are upheld.
- In the long term, the site may be consolidated with a new or existing campus in the southern portion of the Gold Coast.

Ridgeway

- The site is not used for training delivery in the region and is available for transfer or re-use.
- The site incurs up to \$550,000 annually in holding costs.

desbt.qld.gov.au

Department of Employment, Small Business and Training

PO Box 15033

City East, Brisbane QLD 4002

Telephone: 13 QGOV (13 74 68)

Email: info@desbt.qld.gov.au