

# Building future skills

A tafe infrastructure plan for Brisbane North



## Copyright

This publication is protected by the Copyright Act 1968.

© State of Queensland, November 2019.



## Licence

This work is licensed by the Department of Employment, Small Business and Training under the Creative Commons Attribution (CC BY) 4.0 International licence.

To view a copy of this licence, visit: <https://creativecommons.org/licenses/by/4.0/>

You are free to copy, communicate and adapt this publication, as long as you attribute appropriately, including:

- the name of the publication “Building future skills – A tafe infrastructure plan for Brisbane North”
- a link to the work if you have sourced it online
- the copyright licence statement above
- indicate if you have made changes to the work.

# Minister's message



A key strength of Queensland's vocational education and training system is its commitment to giving students practical, hands-on skills developed in part, in purpose-built training facilities that mirror real world workplaces.

Investing in the delivery of high-quality training supported by a network of fit-for-purpose training infrastructure is essential to ensure Queenslanders have the skills they need to secure a job and progress their careers in our state's growing industries.

For our students, having access to state-of-the-art training facilities and equipment will ensure they are job ready. For our teachers and trainers, it will provide them with contemporary training spaces to ensure training delivery meets industry needs.

Across Queensland there are currently 77 sites owned or leased by the State Government and the public training providers for the delivery of vocational education and training.

This includes the network of TAFE Queensland and Central Queensland University campuses as well as sites utilised by the state's other public providers of training.

The Queensland Government has released the *"Skills for Queensland – Great training for quality jobs"* plan to secure our future prosperity through a skilled and adaptive workforce. More innovative and flexible training opportunities will give Queenslanders better access to skilling, reskilling and upskilling pathways to remain agile as jobs evolve.

The Government will invest more than \$105 million during 2019-20, in projects across Queensland as part of the long-term plan to revitalise the state's training portfolio. To complement this program, over the next few years we have significant investments planned for the modernisation of Pimlico, Cairns, Mount Gravatt, Toowoomba, Alexandra Hills and the Ashmore and Southport sites at the Gold Coast.

As we deliver on this investment, we also need to plan for the training needs of all Queensland communities to ensure our investment in training facilities is going where it is needed and we are ready to support training delivery into the future.

This has led to the development of 14 regional plans that outline the Queensland Government's proposed investment in training infrastructure as well as strategies to provide access to relevant training spaces to meet local industry and community needs.

For the Brisbane North region, this plan outlines the future for three TAFE Queensland campuses and a former site at Ithaca (Red Hill) to ensure training spaces meet the needs of residents and industry throughout the corridor.

Central to this planning, is ensuring our training infrastructure can readily adapt to changing technology and industry advancements and complement a range of delivery options such as online learning and workplace-based training.

This plan outlines how we intend to provide the Brisbane North region with the training infrastructure it needs to skill its workforce for the future.

## **The Honourable Shannon Fentiman MP**

Minister for Employment and Small Business  
Minister for Training and Skills Development

# Advancing Queensland's training infrastructure

## Our current training footprint

Across the state, training is currently delivered from a range of training spaces including:

- state-owned training infrastructure
- leased, purpose-built training facilities
- workplaces
- trade training centres and other facilities shared with state and non-state secondary schools
- shared facilities with universities (such as QUT Caboolture and the University of the Sunshine Coast)
- shared facilities with industry (such as Queensland Rail's training facility at Acacia Ridge).

TAFE Queensland and Central Queensland University are the primary users of the state's training infrastructure alongside Queensland's other public training providers Aviation Australia and the Aboriginal Centre for the Performing Arts.

Within the 77 training sites owned or leased by the Queensland Government, there are four types of training facilities:

- a full campus: may offer trade and/or nontrade training and provides a full range of services including a customer services centre, library and canteen.
- training centre: may offer trade and/or nontrade training as well some services such as a customer service centre.
- specialised training centre: offers training for a specific industry or skill area (i.e. trades) from a full campus or training centre.
- learning hubs: a small training space generally co-located with other services (i.e. high school) or on leased premises.

## Planning for the future

In 2019-20, the Government is committed to investing over \$105 million in infrastructure projects across Queensland as part of the long-term plan to revitalise the state's training portfolio.

From 2018 to 2021, significant investments will be made to modernise the Pimlico, Cairns, Mount Gravatt and Toowoomba training sites, and training infrastructure within the regions of the Gold Coast and Redlands.

While there have been periods of significant investment in the state's training infrastructure over the years, the majority of the state-owned facilities are decades old and were designed to meet the training needs at the time of construction. For some facilities, their age, location and changes in industry skills needs, have meant that they are no longer fit-for-purpose.

This regional infrastructure planning process is working to prepare the state's training facilities for future training needs, particularly in areas of projected population or employment growth and to respond to changing skills needs of industry. This includes ensuring infrastructure upgrades incorporate projected climate change data and take into account the skills and training needs as a result of global trends such as digital innovation, shifting markets, and the transition to a low carbon economy, which will significantly impact Queensland industries and employment.

TAFE Queensland currently occupy forty of the forty-seven State-owned sites. A number of these are earmarked to undergo master planning in the next few years to determine investment opportunities.

# Brisbane North regional overview

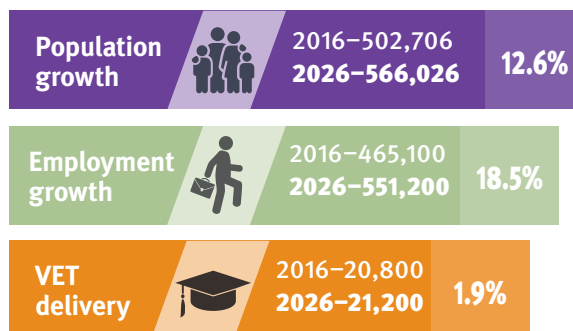
The Brisbane North region<sup>1</sup> encompasses the northern part of the Brisbane City Council local government area, north of the Brisbane River. The area incorporates one of Queensland’s major health hubs, including major hospital and health care services.

Population and employment in the Brisbane North region is projected to grow over ten years to 2026<sup>23</sup>.

Jobs Queensland, through its Anticipating Future Skills project<sup>4</sup> forecasts that the greatest employment changes to occur in the Brisbane region by the year 2022 will be in the following industries:

- health care and social assistance
- professional, scientific and technical services
- education and training
- transport, postal and warehousing
- manufacturing.

The impact of digital technologies and involvement in global value chains are driving changes in workforce composition and skills throughout Queensland, triggering a transition to a knowledge and services based economy. While mining remains one of the biggest economic contributors in the state in terms of output, service industries such as construction, health care and social assistance now contribute almost as much—and the workforce of the future will require higher levels of skills and different skill sets<sup>5</sup>.



Sources: QGSO population projections 2018 edition (medium series); Queensland Treasury employment projections 2016 (medium series) place of work – data sets adjusted to align with this region; State Training Agency Clearinghouse (STAC) Database 2017

Significant projects<sup>6</sup> likely to affect the region’s short to medium term economic outlook and job opportunities include:

- School investment – \$85.6 million
- Cross River Rail – \$5.4 billion commitment
- Gateway Motorway upgrades – \$1.143 billion
- Northern Transitway development – \$53 million
- Northshore Hamilton development – \$327.2 million.

Other major projects include Howard Smith Wharves, Brisbane Metro, Brisbane Quarter, Queens Wharf, and Brisbane Airport redevelopment.

1 Reporting within this document for the Brisbane North region is based on the following Statistical Area 3 (SA3) regions: Bald Hills-Everton Park, Chermside, Nundah, Sandgate, The Gap- Enoggera, Brisbane Inner-North, Kenmore-Brookfield-Moggill, and Brisbane Inner-West and Statistical Area 2 (SA2) regions: Brisbane City, Fortitude Valley, New Farm, and Spring Hill.

2 Queensland Treasury employment projections 2016 (medium series) place of work – data sets adjusted to align with this region

3 Employment projections are based on the 2015 edition; the data set has been adjusted to 2016.

4 Jobs Queensland for this project is based on the SA4 regions: Brisbane Inner City, Brisbane-East, Brisbane-North, Brisbane-South, and Brisbane-West.

5 Jobs Queensland: The Future of Work in Queensland to 2030 Discussion Paper – 2019

6 Sourced from Regional Action Plans (Queensland Budget 2018-19) and State Infrastructure Plan (Part B: Program – 2018 update)

# Training infrastructure in the Brisbane North region

Within the Brisbane North region, there are three active TAFE Queensland campuses at Bracken Ridge, Grovely, and Eagle Farm, and a fourth, former site at Ithaca. Other public training providers that operate in this region include Aviation Australia which specialises in aviation training based at the Brisbane Airport precinct, and the Aboriginal Centre for the Performing Arts based in Fortitude Valley.

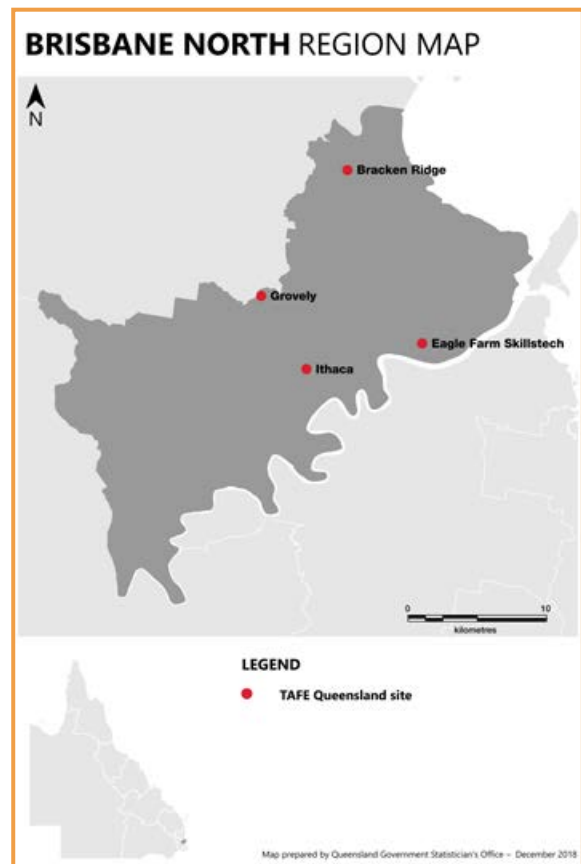
**Bracken Ridge** is a full campus that provides both trade and non-trade training. It has particularly high student volumes in automotive, construction and electrotechnologies studies.

**Eagle Farm** is a specialised trade training centre which offers a range of courses in automation, security technologies, glass and glazing, plumbing and electrotechnology. The campus includes facilities for renewable technologies, process instrumentation, and telecommunications training.

**Grovely** campus is a specialised training centre known for its veterinary training services and horticulture.

**Ithaca** is no longer used for training delivery. Ithaca is a vacant site and is due to be transferred for government re-use.

The region's demand for VET has seen general education and training demand remain high between 2015-16 and 2017-18, with significant increases in community services, construction, engineering, furnishing, and utilities sectors over the same period.



*This map is intended for general reference use only*



## Bracken Ridge

The TAFE Queensland Bracken Ridge campus features purpose-built training facilities for a range of trade and non-trade related courses including a training restaurant.

Bracken Ridge TAFE provides a significant volume of training to school students, both on campus and on school premises, and has strong partnerships with 44 schools in north Brisbane.

The Bracken Ridge TAFE campus has experienced an enrolment increase over the last three years, and it is located in a catchment forecast to experience significant population growth in the next 10 years.

Bracken Ridge TAFE is a large site which requires consideration of better site use. The site is mostly undeveloped with vast expanses of car parks and unused turfed areas. There are opportunities in the space to review land use and to investigate redevelopment of the site for both training and non-training uses, particularly considering the site's proximity to the Fitzgibbon Priority Development Area and former Queensland University of Technology Carseldine campus.

The site has significant opportunities for an upgrade and detailed planning has commenced to determine the most appropriate options for potential investment.



## Future outlook

The government has invested almost \$1.2 million over the last two years for a range of maintenance to the Bracken Ridge campus.

The site has significant opportunities to be upgraded, and over \$7 million has been allocated for maintenance and capital works over 2019-20 and 2020-21, which includes detailed planning and refurbishment works. Detailed options planning for this site commenced in early 2019, which will provide options for the most appropriate use of allocated funding and potential investment opportunities.

It is anticipated that future investment will be targeted towards non-trades training in areas such as health care and social assistance, community services and to provide flexible learning spaces.

The campus has the capacity to manage the ongoing training demand and will continue to deliver training in both trade and non-trade courses for the short to medium term.

### Infrastructure plan: Bracken Ridge

- Approximately \$7 million has been allocated for maintenance and capital works over the next two years, which includes detailed planning and refurbishment works.
- Master planning for the North Brisbane area commenced in early 2019 and it is anticipated that future investment will be targeted towards non-trades in areas such as health care and social assistance, community services and to also provide flexible learning spaces.

## Eagle Farm

The TAFE Queensland Eagle Farm campus is a specialised trade training centre located within an industrial and residential area known as the Australian Trade Coast, an area categorised as one of Brisbane’s ‘major industrial areas’ which supports air, rail, and sea port activity as a strategic inner city industrial area.

The campus also adjoins the Northshore Priority Development Area which is the largest waterfront urban renewal project in Queensland. Opportunities exist to revitalise the Eagle Farm TAFE site in line with the Northshore precinct and take advantage of local economic growth and potential partnerships.

There is a current focus on delivery of training for construction related trades and electrotechnology industries with manufacturing and engineering potential areas of training growth.

The residential and industrial growth and infrastructure improvements in the Eagle Farm catchment strongly suggest the need for a review of the Eagle Farm TAFE campus course offerings and partnership opportunities with private industry.



### Future outlook

Eagle Farm TAFE campus is a site that requires significant investment as buildings are ageing, too large and lack modern training spaces. Over the last two years, approximately \$1 million has been invested in general maintenance and capital works at this site due to ageing facilities and required upgrades of building structures and systems. An additional \$760,000 is budgeted for further maintenance works over the coming two years.

The Eagle Farm TAFE site requires modernisation to its engineering facilities and an expansion of electrotechnology facilities.

\$17.2 million has been budgeted for capital works at the site over 2019-20 and 2020-21. This will go toward feasibility studies and possible construction programs relating to a potential additional workshop and laboratories and upgrades to metal fabrication areas, as well as significant building upgrades to bring the aging site up to current standards.

Given the site’s prominent location within the Australian Trade Coast, there is a significant opportunity to develop partnerships with industry groups in a variety of sectors relating to international export, service industries and emerging technologies.

The site will be maintained with its current emphasis on trade training, however the establishment of collaborative learning spaces should be considered to support export related industry growth and its effects on training in the region. The campus has an area of undeveloped land at the Kingsford Smith Road frontage which may be suitable for redevelopment.

Master planning will consider better use of the infrastructure with the potential to refocus on the delivery of training for employment in emerging, innovative and high tech industries, with emphasis on electrical trades, renewable energies and automation. Master planning will also determine the most appropriate use of current allocated funding and if further investment is required.

### Infrastructure plan:

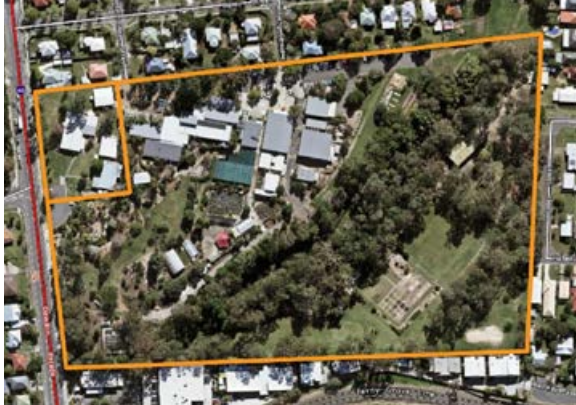
#### Eagle Farm

- \$760,000 is budgeted for further maintenance works over the coming two years.
- The site requires modernisation to its engineering facilities and an expansion of electrotechnology facilities. \$17.2 million is budgeted for significant building upgrades, ongoing master planning, and proposed for investment for workshop/laboratories expansion and upgrades to metal fabrication areas.



## Grovely

The TAFE Queensland Grovely training centre offers a range of specialised courses including animal studies, English language, horticulture, landscape design, rural operations, small business management and turf management.



### Future outlook

Almost \$750,000 was invested in the Grovely TAFE site for maintenance over the last two years which included internal painting of classrooms. An additional \$465,000 is budgeted for maintenance programs over the next two financial years.

The campus has the capacity to manage the expected training demand and is fit-for-purpose, however, investment is needed to modernise training delivery.

The Grovely TAFE campus has land that is surplus to training needs, providing an opportunity for redevelopment.

Its proximity to public and active transport, populated residential areas and the Brisbane CBD, its links to protected green spaces and parks, and the demographic of the area puts this site in an excellent position for place-making in transforming the campus from a training only facility into a vibrant community space. Master planning of Brisbane North sites will consider development opportunities for this facility.

Other government initiatives will be considered for the campus to expand the social infrastructure available to the local community. These include uses such as Youth Foyers and Urban Education Villages in collaboration with other state agencies.

There is also an opportunity to redevelop the campus to include increased teaching capacity and partnerships with external groups.

### Infrastructure plan: Grovely

- Over \$1.7 million is proposed over the next two years for possible construction programs to refurbish and consolidate training requirements and provide modern learning environments.
- \$465,000 is proposed for maintenance programs over the next two financial years.



## Ithaca (Red Hill)

This TAFE Queensland campus is permanently closed. An average of \$520,000 is spent annually on holding costs and maintenance at this site.



## Future outlook

The site will be transferred to the Department of Education in late 2019 for school infrastructure. Any funds realised from the transfer of the site are proposed to be reinvested back into the training portfolio with a focus on regional sites in Brisbane North and Sunshine Coast – Moreton Bay areas (including Bracken Ridge, Eagle Farm and North Lakes).

### Infrastructure plan:

#### Ithaca (Red Hill)

- The site is not required for training delivery in the region and as a result, the site will be transferred to the Department of Education.



# Brisbane North region training infrastructure plan

The Queensland Government will invest more than \$28 million in the region over the next two years (2019–20 and 2020–21) on both maintaining and modernising training facilities.

The current regional infrastructure footprint is well placed to service future demand, however all campuses require revitalisation which provides opportunities for redevelopment for training and non-training uses.

The regional infrastructure planning has identified the proposed investment profile for the region and as a result, master planning has commenced.

In the short term, all sites will be maintained with their current emphasis. However, long-term training demand may require an additional trade training site with the undeveloped North Lakes site being investigated for suitability as part of the master planning process.

DESBT planning in conjunction with TAFE Queensland indicates that:

- A new centre of excellence for trade training could be developed at North Lakes
- Most trades training from Eagle Farm and Bracken Ridge could be decanted to North Lakes
- Eagle Farm could be developed into a centre of excellence for future focussed industries
- Bracken Ridge could be developed into a centre of excellence for health and community services

TAFEQ is also considering further options in North Brisbane which will then integrate with the North Brisbane plan.

Future potential for private partnerships and inclusion of whole-of-government initiatives will be investigated further.

## Summary of planned actions

### Bracken Ridge

- Approximately \$7 million has been allocated for maintenance and capital works over the next two years, which includes master planning and refurbishment.
- Master planning for the North Brisbane area commenced in early 2019, and it is anticipated that future investment will be targeted towards non-trades in areas such as health care and social assistance, community services and to also provide flexible learning spaces.

### Eagle Farm

- \$760,000 is budgeted for further maintenance works over the coming two years.
- The site requires modernisation to its engineering facilities and an expansion of electrotechnology facilities. \$17 million has been proposed for investment in workshop/laboratories expansion and upgrades to metal fabrication areas, as well as significant building upgrades.
- Master planning commenced in early 2019 as part of the North Brisbane review.

### Grovely

- Over \$1.7 million is proposed over the next two years for master planning and possible construction programs to refurbish and consolidate training requirements and provide modern learning environments.
- \$465,000 is proposed for maintenance programs over the next two financial years.

### Ithaca

- The site is not required for training delivery in the region.

[desbt.qld.gov.au](http://desbt.qld.gov.au)

**Department of Employment, Small Business and Training**

PO Box 15033

City East, Brisbane QLD 4002

Telephone: 13 QGOV (13 74 68)

Email: [info@desbt.qld.gov.au](mailto:info@desbt.qld.gov.au)