

Building future skills

A training infrastructure plan for Redlands



Copyright

This publication is protected by the Copyright Act 1968.

© State of Queensland, September 2019.



Licence

This work is licensed by the Department of Employment, Small Business and Training under the Creative Commons Attribution (CC BY) 4.0 International licence.

To view a copy of this licence, visit: <https://creativecommons.org/licenses/by/4.0/>

You are free to copy, communicate and adapt this publication, as long as you attribute appropriately, including:

- the name of the publication “Building future skills – A tafe infrastructure plan for Redlands”
- a link to the work if you have sourced it online
- the copyright licence statement above
- indicate if you have made changes to the work.

Minister's message



A key strength of Queensland's vocational education and training system is its commitment to giving students practical, hands-on skills developed in part, in purpose-built training facilities that mirror real world workplaces.

Investing in the delivery of high-quality training supported by a network of fit-for-purpose training infrastructure is essential to ensure Queenslanders have the skills they need to secure a job and progress their careers in our state's growing industries.

For our students, having access to state-of-the-art training facilities and equipment will ensure they are job ready. For our teachers and trainers, it will provide them with contemporary training spaces to ensure training delivery meets industry needs.

Across Queensland there are currently 77 sites owned or leased by the State Government and the public training providers for the delivery of vocational education and training.

This includes the network of TAFE Queensland and Central Queensland University campuses as well as sites utilised by the state's other public providers of training.

The Queensland Government has released the *"Skills for Queensland – Great training for quality jobs"* plan to secure our future prosperity through a skilled and adaptive workforce. More innovative and flexible training opportunities will give Queenslanders better access to skilling, reskilling and upskilling pathways to remain agile as jobs evolve.

The Government will invest more than \$105 million during 2019-20, in projects across Queensland as part of the long-term plan to revitalise the state's training portfolio. To compliment this program, over the next few years we have significant investments planned for the modernisation of Pimlico, Cairns, Mount Gravatt, Toowoomba, Alexandra Hills and the Ashmore and Southport sites at the Gold Coast.

As we deliver on this investment, we also need to plan for the training needs of all Queensland communities to ensure our investment in training facilities is going where it is needed and we are ready to support training delivery into the future.

This has led to the development of 14 regional plans that outline the Queensland Government's proposed investment in training infrastructure as well as strategies to provide access to relevant training spaces to meet local industry and community needs.

This plan outlines the future for two TAFE sites in Alexandra Hills and Wellington Point and the vacant Cleveland land to ensure training facilities meet the needs of residents and industry throughout the Redlands region.

Central to this planning, is ensuring our training infrastructure can readily adapt to changing technology and industry advancements and complement a range of delivery options such as online learning and workplace-based training.

This plan outlines how we intend to provide the Redlands region with the training infrastructure it needs to skill its workforce for the future.

The Honourable Shannon Fentiman MP

Minister for Employment and Small Business

Minister for Training and Skills Development

Advancing Queensland's training infrastructure

Our current training footprint

Across the state, training is currently delivered from a range of training spaces including:

- state-owned training infrastructure
- leased, purpose-built training facilities workplaces
- trade training centres and other facilities shared with state and non-state secondary schools
- shared facilities with universities (such as QUT Caboolture or University of the Sunshine Coast)
- shared facilities with industry (such as Queensland Rail's training facility at Acacia Ridge).

TAFE Queensland and Central Queensland University are the primary users of the state's training infrastructure alongside Queensland's other public training providers Aviation Australia, the Aboriginal Centre for the Performing Arts and the Queensland Agricultural Training Colleges.

Within the 77 training sites owned or leased by the Queensland Government, there are four types of training facilities:

- a full campus: may offer trade and/or nontrade training and provides a full range of services including a customer services centre, library and canteen.
- training centre: may offer trade and/or nontrade training as well some services such as a customer service centre.
- specialised training centre: offers training for a specific industry or skill area (i.e. trades) from a full campus or training centre.
- learning hubs: a small training space generally co-located with other services (i.e. high school) or on leased premises.

Planning for the future

In 2019-20, the Government is committed to investing over \$105 million in infrastructure projects across Queensland as part of the long-term plan to revitalise the state's training portfolio.

From 2018 to 2021, significant investments will be made to modernise the Pimlico, Cairns, Mount Gravatt and Toowoomba training sites, and training infrastructure within the regions of the Gold Coast and Redlands.

While there have been periods of significant investment in the state's training infrastructure over the years, the majority of the state-owned facilities are decades old and were designed to meet the training needs at the time of construction. For some facilities, their age, location and changes in industry skills needs, have meant that they are no longer fit-for-purpose.

This regional infrastructure planning process is working to prepare the state's training facilities for future training needs, particularly in areas of projected population or employment growth and to respond to changing skills needs of industry. This includes ensuring infrastructure upgrades incorporate projected climate change data and take into account the skills and training needs as a result of global trends such as digital innovation, shifting markets, and the transition to a low carbon economy, which will significantly impact Queensland industries and employment.

TAFE Queensland currently occupy forty of the forty-seven State-owned sites. A number of these are earmarked to undergo master planning in the next few years to determine investment opportunities.

Redlands regional overview

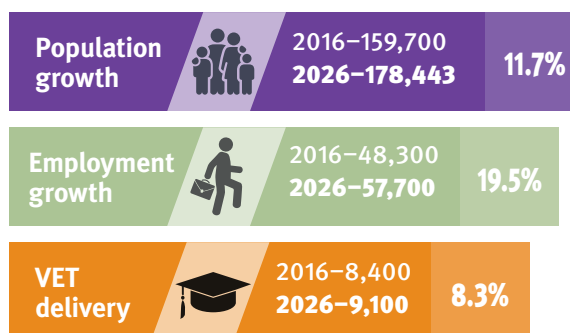
The Redland region¹ comprises the Redland City Council local government area. The region's economic drivers are in the health care and community services and construction sectors. The area comprises coastal and hinterland townships which offer tourist attractions such as the Stradbroke Islands, Sirromet Winery, and Cornubia Forest Park. The key employment hubs are in Capalaba and Cleveland. Between 2016 and 2026, population and employment in the Redlands region is projected to grow steadily²³.

The Jobs Queensland Anticipating Future Skills project⁴, forecasts that the greatest employment changes to occur in the Brisbane region by the year 2022 will be in the following industries:

- health care and social assistance
- professional, scientific and technical services
- education and training
- transport, postal and warehousing, and
- manufacturing.

The impact of digital technologies and involvement in global value chains are driving changes in workforce composition and skills throughout Queensland, triggering a transition to a knowledge and services based economy.

While mining remains one of the biggest economic contributors in the state in terms of output, service industries such as construction, health care and social assistance now contribute almost as much, and the workforce of the future will require higher levels of skills and different skill sets.⁵



Sources: QGSO population projections 2018 edition (medium series); Queensland Treasury employment projections 2016 (medium series) place of work – data sets adjusted to align with this region; State Training Agency Clearinghouse (STAC) Database 2017

Significant projects likely to affect the region's short to medium term economic outlook and job opportunities include⁶:

- New classrooms at Alexandra Hills State High School – \$3.8 million
- Cleveland District State High School – \$18 million
- Redlands Hospital upgrades⁰ – \$5.33 million.

1 Reporting within this document for the Redlands region is based on the following Statistical Area 3 (SA3) regions: Capalaba and Cleveland-Stradbroke.

2 QGSO population projections 2018 edition (medium series), Queensland Treasury employment projections 2016 (medium series) place of work – data sets adjusted to align with this region

3 Employment projections are based on the 2015 edition; the data set has been adjusted to 2016.

4 Jobs Queensland reporting is based on the SA4 regions of Brisbane Inner City, Brisbane-East, Brisbane-North, Brisbane-South, and Brisbane-West.

5 Jobs Queensland: The Future of Work in Queensland to 2030 Discussion Paper -2019

6 Sourced from Regional Action Plans (Queensland Budget 2018-19) and State Infrastructure Plan (Part B: Program – 2018 update)

Training infrastructure in the Redlands

Training in the Redlands region is delivered from two TAFE sites and is predominantly trade training with a particular focus on construction.

Alexandra Hills TAFE campus delivers both trade and non-trade training offering courses in aged care, automotive, construction, electrotechnology, fitness, general education, nursing and plumbing. The campus supports apprentices in their first year. The TAFE Queensland senior studies program is co-located at the campus linking high school students with vocational training. There are a number of buildings leased to third parties, including a school for students with Autism.

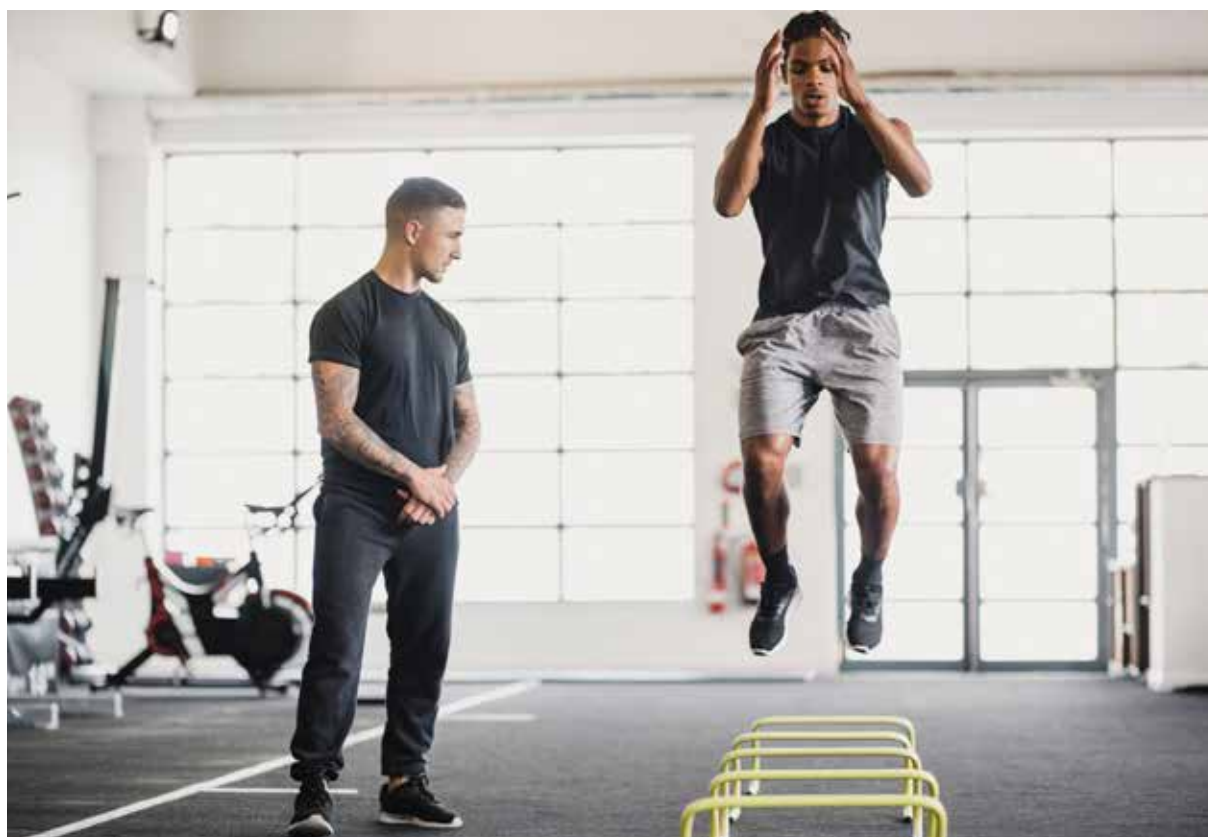
Wellington Point TAFE site is a leased boat shed used for an elective unit in TAFE Queensland's Senior Studies Program.

Cleveland is a vacant land area and is undeveloped.

Enrolments in construction courses have doubled in the last three years, with over 500 students enrolled in 2017-2018. Other key areas of delivery include engineering, general education, and health. Enrolments are projected to increase over the 10 years to 2027.



This map is intended for general reference use only



Wellington Point

The Wellington Point TAFE site is a small training centre located with easy access to the Manly Boat Harbour. The site comprises a single classroom space and boat shed providing a practical learning space for theory classes conducted at the Alexandra Hills TAFE site.

The use of the site forms an integral part of the Senior Studies program managed by TAFE Queensland.

The site is leased and there are no associated maintenance or capital costs.



Future outlook

Access to the site will be maintained in its current capacity and is expected to meet future demand.

Infrastructure plan: Wellington Point

- The site is leased by TAFE Queensland and there are no associated maintenance or capital costs.

Cleveland

The 15.73 hectare site is undeveloped and located adjacent to the Redland Hospital. Annually, \$5,000 is expended on holding costs.

This site is vacant land only and is not required for training delivery in the region. As a result, the land is considered to be available for transfer for strategic government reuse. The proceeds from the transfer of the site would be reinvested into the training portfolio.



Infrastructure plan: Cleveland

- The vacant land is considered to be available for transfer for strategic government reuse.

Alexandra Hills

The Alexandra Hills TAFE campus is the key training facility in the Redlands region, and is well placed to deliver ongoing trade and non-trade training. It has sound connections to public transport networks and adjoins the Alexandra Hills State High School.

The area is subject to significant growth in population and employment. This campus has seen increased enrolments over the last three years, particularly in automotive, construction, engineering, utilities and health. Training demand is forecast in health, construction and related trades.



Future outlook

Over the last two years more than \$1 million was invested in capital and maintenance programs, mainly for building rectification works. Approximately \$5 million will be spent on capital and maintenance programs over the next two years to bring the facilities up to current standards.

In addition to this, the state government will make a significant investment of approximately \$10 million in 2019-20 at the campus for major revitalisation works. The investment will include improvements and expansion to Plumbing Trades, improvements to Engineering, Plumbing and Construction Trades, and improvements to Nursing and Allied Health.

There is a third party long-term lease for buildings at the rear of the site and offers specialised education and training to children with Autism.

The campus has capacity to manage the expected growth and will continue to deliver training with an emphasis on trade training and health.

Infrastructure plan: Alexandra Hills

- Up to \$10 million in capital investment is proposed for the site. These funds will be invested predominantly in trades. Works will include upgrades to current facilities and new builds to ensure flexibility to accommodate future skills.
- A further \$5 million will be invested in additional capital and maintenance programs over the next two years.



Redlands training infrastructure plan

The Queensland Government is making a significant investment of approximately \$15 million in the region over the next two years on both maintenance and modernising of training facilities.

The Alexandra Hills TAFE campus is the key regional training facility in the Redlands region and is well placed to deliver ongoing trade and non-trade training. It has sound connections to public transport networks and is located on a key north-south thoroughfare. Population growth in the broader Brisbane region is expected to be significant over the next 10-20 years. The region has planned major projects over the next 10 years that may increase the demand for trade training delivery.

The region's training delivery demand has seen significant increases in the areas of automotive, construction, engineering, utilities and health.

The campus has the capacity to accommodate the projected training demand, and will be retained, refurbished and revitalised as a key training facility. Investment opportunities for longer term use of land and buildings for future training needs will be examined as part of the ongoing planning and options analysis process.

An expansion of trade training facilities will focus on the trade areas of automotive, plumbing, carpentry, electrical and engineering.

In the long term, there are opportunities to develop partnerships with the Redland City Council and Metro South Hospital and Health Services for the ongoing planning for a Redlands health precinct.

Summary of planned actions

Alexandra Hills

- The Alexandra Hills TAFE campus is the key training facility in the Redlands region, and is strategically well placed for the ongoing delivery of both trade and non-trade training.
- Significant investment of approximately \$10 million will be made to improve trade and non-trade training facilities and allow for enrolment growth at the site.
- A further \$5 million will be invested in additional capital and maintenance programs over the next two years to maintain and upgrade the facilities.

Wellington Point

- The site is leased by TAFE Queensland, and it is expected to have capacity to manage the expected growth in demand.

Cleveland

- No training is provided at this site.
- The vacant land is considered to be available for transfer for strategic government reuse.

desbt.qld.gov.au

Department of Employment, Small Business and Training

PO Box 15033

City East, Brisbane QLD 4002

Telephone: 13 QGOV (13 74 68)

Email: info@desbt.qld.gov.au