

Building future skills

A tafe infrastructure plan for the Mackay region



Copyright

This publication is protected by the Copyright Act 1968.

© State of Queensland, November 2019.



Licence

This work is licensed by the Department of Employment, Small Business and Training under the Creative Commons Attribution (CC BY) 4.0 International licence.

To view a copy of this licence, visit: <https://creativecommons.org/licenses/by/4.0/>

You are free to copy, communicate and adapt this publication, as long as you attribute appropriately, including:

- the name of the publication “Building future skills – A tafe infrastructure plan for the Mackay region”
- a link to the work if you have sourced it online
- the copyright licence statement above
- indicate if you have made changes to the work.

Minister's message



A key strength of Queensland's vocational education and training system is its commitment to giving students practical, hands-on skills developed in part, in purpose-built training facilities that mirror real world workplaces.

Investing in the delivery of high-quality training supported by a network of fit-for-purpose training infrastructure is essential to ensure Queenslanders have the skills they need to secure a job and progress their careers in our state's growing industries.

For our students, having access to state-of-the-art training facilities and equipment will ensure they are job ready. For our teachers and trainers, it will provide them with contemporary training spaces to ensure training delivery meets industry needs.

Across Queensland there are currently 77 sites owned or leased by the State Government and the public training providers for the delivery of vocational education and training.

This includes the network of TAFE Queensland and Central Queensland University campuses as well as sites utilised by the state's other public providers of training.

The Queensland Government has released the *"Skills for Queensland – Great training for quality jobs"* plan to secure our future prosperity through a skilled and adaptive workforce. More innovative and flexible training opportunities will give Queenslanders better access to skilling, reskilling and upskilling pathways to remain agile as jobs evolve.

The Government will invest more than \$105 million during 2019-20, in projects across Queensland as part of the long-term plan to revitalise the state's training portfolio. To complement this program, over the next few years we have significant investments planned for the modernisation of Pimlico, Cairns, Mount Gravatt, Toowoomba, Alexandra Hills and the Ashmore and Southport sites at the Gold Coast.

As we deliver on this investment, we also need to plan for the training needs of all Queensland communities to ensure our investment in training facilities is going where it is needed and we are ready to support training delivery into the future.

This has led to the development of 14 regional plans that outline the Queensland Government's proposed investment in training infrastructure as well as strategies to provide access to relevant training spaces to meet local industry and community needs.

For the Mackay region, this plan outlines the future for two TAFE Queensland campuses and three sites owned by Central Queensland University.

Central to this planning, is ensuring our training infrastructure can readily adapt to changing technology and industry advancements and complement a range of delivery options such as online learning and workplace-based training.

This plan outlines how we intend to provide the Mackay region with the training infrastructure it needs to skill its workforce for the future.

The Honourable Shannon Fentiman MP

Minister for Employment and Small Business
Minister for Training and Skills Development

Advancing Queensland's training infrastructure

Our current training footprint

Across the state, training is currently delivered from a range of training spaces including:

- state-owned training infrastructure
- leased, purpose-built training facilities workplaces
- trade training centres and other facilities shared with state and non-state secondary schools
- shared facilities with universities (such as QUT Caboolture and the University of the Sunshine Coast)
- shared facilities with industry (such as Queensland Rail's training facility at Acacia Ridge).

TAFE Queensland and Central Queensland University are the primary users of the state's training infrastructure alongside Queensland's other public training providers Aviation Australia and the Aboriginal Centre for the Performing Arts.

Within the 77 training sites owned or leased by the Queensland Government, there are four types of training facilities:

- a full campus: may offer trade and/or nontrade training and provides a full range of services including a customer services centre, library and canteen.
- training centre: may offer trade and/or nontrade training as well some services such as a customer service centre.
- specialised training centre: offers training for a specific industry or skill area (i.e. trades) from a full campus or training centre.
- learning hubs: a small training space generally co-located with other services (i.e. high school) or on leased premises.

Planning for the future

In 2019-20, the Government is committed to investing over \$105 million in infrastructure projects across Queensland as part of the long-term plan to revitalise the state's training portfolio.

From 2018 to 2021, significant investments will be made to modernise the Pimlico, Cairns, Mount Gravatt and Toowoomba training sites, and training infrastructure within the regions of the Gold Coast and Redlands.

While there have been periods of significant investment in the state's training infrastructure over the years, the majority of the state-owned facilities are decades old and were designed to meet the training needs at the time of construction. For some facilities, their age, location and changes in industry skills needs, have meant that they are no longer fit-for-purpose.

This regional infrastructure planning process is working to prepare the state's training facilities for future training needs, particularly in areas of projected population or employment growth and to respond to changing skills needs of industry. This includes ensuring infrastructure upgrades incorporate projected climate change data and take into account the skills and training needs as a result of global trends such as digital innovation, shifting markets, and the transition to a low carbon economy, which will significantly impact Queensland industries and employment.

TAFE Queensland currently occupy forty of the forty-seven State-owned sites. A number of these are earmarked to undergo master planning in the next few years to determine investment opportunities.

Central Queensland University will maintain its current training footprint in this region noting that the Clermont facility is currently inactive.

Mackay regional overview

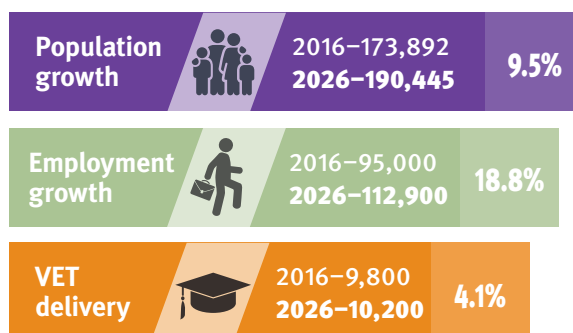
The Mackay region comprises parts of the Mackay, Isaac and Whitsunday local government areas. The region has a diverse economic landscape, with competitive strengths in a growing mining sector and its scenic landscapes encouraging tourism¹.

Between 2016 and 2026, population and employment in the Mackay region is projected to grow²³.

The Jobs Queensland Anticipating Future Skills project⁴ forecasts that the largest employment changes to occur in the Mackay region by the year 2022 will be in the following industries:

- health care and social assistance
- manufacturing
- professional, scientific and technical services
- agriculture, forestry and fishing
- transport, postal and warehousing.

The impact of digital technologies and involvement in global value chains are driving changes in workforce composition and skills throughout Queensland, triggering a transition to a knowledge and services based economy. While mining remains one of the biggest economic contributors in the state in terms of output, service industries such as construction, health care and social assistance now contribute almost as much, and the workforce of the future will require higher levels of skills and different skill sets⁵. Mackay contains a large number of resource-related projects, with mining the largest employer in the region.



Sources: QGSO population projections 2018 edition (medium series); Queensland Treasury employment projections 2016 (medium series) place of work – data sets adjusted to align with this region; State Training Agency Clearinghouse (STAC) Database 2017

Significant projects⁶ likely to affect the region’s short to medium term economic outlook and job opportunities include:

- Bowen Police Station upgrades – \$8.3 million
- Great Barrier Reef Joint Field Management Program – \$330 million
- School investment – \$14.6 million
- Mackay Ring Road works – \$497.4 million
- Peak Downs Highway maintenance – \$224.3 million
- Sarina Hospital redevelopment – \$16.5 million
- Whitsunday Coast Airport upgrades – \$15 million
- Whitsunday Islands National Park works – \$12.1 million.

1 Reporting within this document for the Mackay region is based on the following Statistical Area 3 (SA3) regions: Bowen Basin – North, Mackay, and Whitsunday.
 2 QGSO population projections 2018 edition (medium series), Queensland Treasury employment projections 2016 (medium series) place of work – data sets adjusted to align with this region, data sets were adjusted to align with this region.
 3 Employment projections are based on the 2015 edition; the data set has been adjusted to 2016.
 4 Jobs Queensland reporting for this project is based on the Jobs Queensland reporting is based on the Mackay-Isaac-Whitsunday SA4 region.
 5 Jobs Queensland: The Future of Work in Queensland to 2030 Discussion Paper – 2019.
 6 Sourced from Regional Action Plans (Queensland Budget 2018-19) and State Infrastructure Plan (Part B: Program – 2018 update)

Training infrastructure in Mackay region

Tafe training in the Mackay region is delivered by TAFE Queensland and Central Queensland University (CQU) who are also primary providers of higher education in the region. The Mackay region encompasses TAFE Queensland sites at Bowen and Cannonvale and CQU sites at Mackay City, Ooralea and Clermont.

Cannonvale is a TAFE Queensland training centre that largely delivers training in general education and training, tourism and hospitality.

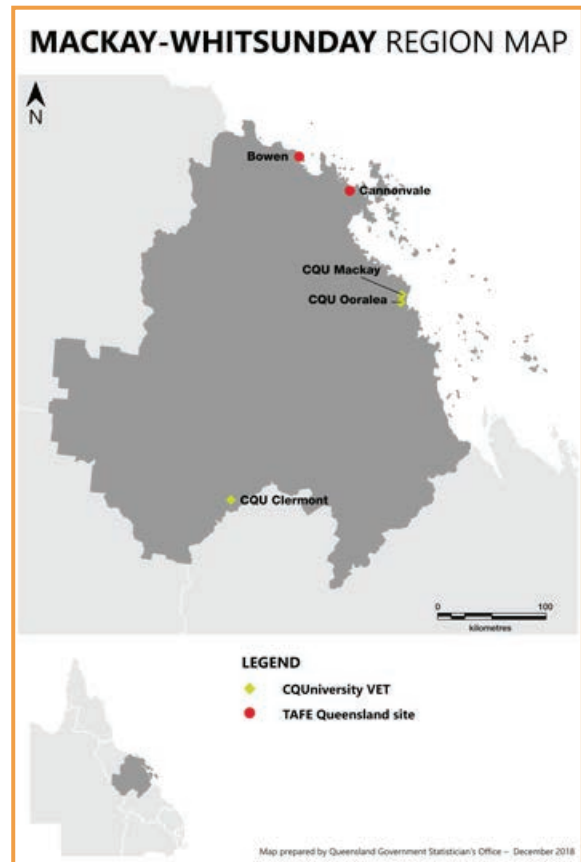
Bowen is a TAFE Queensland training centre that provides general education and training and also delivers training in trades and technology-related fields as well as community services.

Mackay is a CQU campus that delivers programs in hair and beauty, fitness, childcare and hospitality through a training kitchen.

Ooralea is a specialised CQU training centre featuring trade training, engineering technology and computer laboratories.

Clermont is a CQU site that no longer provides training, and includes a single unused residential building.

Student enrolments across the six campuses has seen training delivery demand in general education and training remain high between 2015-16 and 2017-18 with significant enrolments remaining steady in health. There has been substantial growth in engineering, hospitality, electrotechnology, utilities, and transport and distribution trades over the same period. Enrolments are projected to increase marginally over the 10 years to 2026.



This map is intended for general reference use only



Bowen

The TAFE Queensland Bowen training centre is pivotal to the region's training needs.

The current training delivery areas include automotive and engineering, health care, horticulture, and conservation and land management. This reflects the local economy which is based predominantly on tourism and the natural environment.

Almost \$250,000 was invested in maintenance of the site over the last two years.



Future outlook

The campus has capacity to manage training demand and will continue to offer courses and support services that meet the needs of the community.

There is an opportunity to develop additional partnerships with external groups to support the expected growth in the region and campus.

Over the next two years approximately \$500,000 is budgeted for capital and maintenance works at this site. This will ensure the facility has access to modern facilities and equipment and will aid in establishing a student-industry collaborative learning centre to support community and health care training and high-end advanced manufacturing activities.

Infrastructure plan:

Bowen

- \$500,000 is proposed for capital and maintenance works at this site over the next two financial years for modern facilities and equipment that will aid in establishing a student-industry collaborative learning centre to support community and health care training and high-end advanced manufacturing activities.



Cannonvale

The TAFE Queensland Cannonvale campus is located in a key regional strategic area for economic growth, with the potential to diversify training delivery in the future.

General education and training has seen a significant increase in student enrolments over the last three years, with health care and high-end manufacturing industry areas of study being potential areas of growth in demand for training. This correlates with the mining and energy projects and subsequent growth of regional communities in the Mackay region.

Over the last two years approximately \$440,000 was invested in maintenance works at the site.



Future outlook

Cannonvale TAFE campus continues to meet regional training needs and is well placed to support future demand.

There is an opportunity to develop additional partnerships with external groups, particularly with industry and hospitals, to support the expected growth in the region and campus.

More than \$985,000 is proposed to be invested in capital and maintenance programs in the next two years. This funding will establish collaborative learning spaces to support major tourism and community and health care training, and high-end advanced manufacturing activities.

Infrastructure plan: Cannonvale

- Over \$985,000 is proposed to be invested in both capital and maintenance programs in the next two years to establish collaborative learning spaces to support major tourism and community and health care training, and high-end advanced manufacturing activities.



Mackay

Mackay campus is one of CQU's two Mackay sites and is located in the Mackay CBD and is well placed in providing an operational hairdressing and beauty salon, a fitness training hub, and a range of classrooms and computer laboratories.

The site is owned by CQU and the state government will continue to work collaboratively to ensure CQU is supported in providing tafe training to the community in modern facilities.

In 2017-18, CQU invested more than \$2.2 million in capital and maintenance programs at the site with a further \$1.23 million in 2018-19.



Future outlook

The campus has capacity to manage training demand and will continue to offer services that meet the needs of the local community. Targeted investment is required to maintain the high service level provided to the community.

CQU has forecast ongoing investment in the site.

Infrastructure plan: Mackay

- The CBD site is owned by CQU who are forecasting ongoing investments.



Ooralea

Another Mackay-based campus owned by CQU, Ooralea features a purpose built \$46 million Trades Training Centre and a range of facilities including lecture theatres and performance theatres, trade training workshops, computer and nursing laboratories, videoconference rooms, recording studios, student accommodation and more.

In 2017-18, CQU invested \$330,000 in capital and maintenance programs at the site with a further \$130,000 in 2018-19.



Future outlook

Ooralea continues to meet regional training needs and is well placed to support future demand for specialist training in engineering and automotive trades.

There is an opportunity to further develop additional partnerships with external groups, such as local industry in the heavy automotive trade, to support the expected growth in the region and campus. CQU and BHP will continue their strategic community partnership in Central and North Queensland, targeting the educational aspirations of regionally-based students.

CQU has forecast ongoing investments in the site.

CQU is currently in discussions with the Government on proposed expansions to its Ooralea campus to support Heavy Automotive training. Currently the site caters to light vehicle trade training and the expansion is required to meet industry demands in the region.

Infrastructure plan:

Ooralea

- The site is owned by Central Queensland University who are investing annually in the upkeep of modern training facilities.



Mackay region training infrastructure plan

With moderate growth projected for training delivery over the next decade, the current regional infrastructure footprint is well placed to service training demand. Future consideration for the region will include an examination of options to enhance the sites to better meet the training needs of each of the unique communities throughout the region, with a current focus on health and community services, and mining and related trades training.

The current configuration of the Bowen campus is a large site with ageing buildings with investment likely for ongoing maintenance and modernisation of the site to promote shared use of facilities.

The Mackay city campus will continue its strong focus on the delivery of nursing, hairdressing, beauty and hospitality with key training infrastructure including a restaurant, and hairdressing and beauty salon. As part of Central Queensland University's dual-sector status, the Mackay Engineering College located at Ooralea is integrated within the university campus and will continue to offer tafe in a co-located space with higher education.

The Clermont site has remained inactive and there are no plans for any future development of this site.

Summary of planned actions

All campuses will be maintained with their current training emphasis across the region.

Bowen

- \$500,000 is proposed for capital and maintenance works at this site over the next two years to support Community and Health care training and high end advanced manufacturing activities.

Cannonvale

- The site is well placed to support future demand, with over \$985,000 proposed to be invested in the next two years to support major tourism and community and health care training, and high end advanced manufacturing activities.

Central Queensland University (CQU) sites

- The Mackay, Ooralea and Clermont sites are owned by CQU. The State government will continue to work collaboratively to ensure that CQU is supported in providing training to the community in modern facilities.
- The Mackay CBD and Ooralea sites will receive continued investment for the upkeep of modern training facilities, and will continue providing training in both trade and non-trade areas.
- The Clermont facility does not provide training.

desbt.qld.gov.au

Department of Employment, Small Business and Training

PO Box 15033

City East, Brisbane QLD 4002

Telephone: 13 QGOV (13 74 68)

Email: info@desbt.qld.gov.au