

Building future skills

A tafe infrastructure plan for Logan



Copyright

This publication is protected by the Copyright Act 1968.

© State of Queensland, October 2019.



Licence

This work is licensed by the Department of Employment, Small Business and Training under the Creative Commons Attribution (CC BY) 4.0 International licence.

To view a copy of this licence, visit: <https://creativecommons.org/licenses/by/4.0/>

You are free to copy, communicate and adapt this publication, as long as you attribute appropriately, including:

- the name of the publication “Building future skills – A tafe infrastructure plan for Logan”
- a link to the work if you have sourced it online
- the copyright licence statement above
- indicate if you have made changes to the work.

Minister's message



A key strength of Queensland's vocational education and training system is its commitment to giving students practical, hands-on skills developed in part, in purpose-built training facilities that mirror real world workplaces.

Investing in the delivery of high-quality training supported by a network of fit-for-purpose training infrastructure is essential to ensure Queenslanders have the skills they need to secure a job and progress their careers in our state's growing industries.

For our students, having access to state-of-the-art training facilities and equipment will ensure they are job ready. For our teachers and trainers, it will provide them with contemporary training spaces to ensure training delivery meets industry needs.

Across Queensland there are currently 77 sites owned or leased by the State Government and the public training providers for the delivery of vocational education and training.

This includes the network of TAFE Queensland and Central Queensland University campuses as well as sites utilised by the state's other public providers of training.

The Queensland Government has released the *Skills for Queensland - Great training for quality jobs* plan to secure our future prosperity through a skilled and adaptive workforce. More innovative and flexible training opportunities will give Queenslanders better access to skilling, reskilling and upskilling pathways to remain agile as jobs evolve.

The Government will invest more than \$105 million during 2019-20, in projects across Queensland as part of the long-term plan to revitalise the state's training portfolio. To complement this program, over the next few years we have significant investments planned for the modernisation of Pimlico, Cairns, Mount Gravatt, Toowoomba, Alexandra Hills and the Ashmore and Southport sites at the Gold Coast.

As we deliver on this investment, we also need to plan for the training needs of all Queensland communities to ensure our investment in training facilities is going where it is needed and we are ready to support training delivery into the future.

This has led to the development of 14 regional plans that outline the Queensland Government's proposed investment in training infrastructure as well as strategies to provide access to relevant training spaces to meet local industry and community needs.

For Logan, this plan outlines the future for two TAFE Queensland campuses at Loganlea and Browns Plains.

Central to this planning, is ensuring our training infrastructure can readily adapt to changing technology and industry advancements and complement a range of delivery options such as online learning and workplace-based training.

This plan outlines how we intend to provide the Logan community with the training infrastructure it needs to skill its workforce for the future.

The Honourable Shannon Fentiman MP

Minister for Employment and Small Business
Minister for Training and Skills Development

Advancing Queensland's training infrastructure

Our current training footprint

Across the state, training is currently delivered from a range of training spaces including:

- state-owned training infrastructure
- leased, purpose-built training facilities workplaces
- trade training centres and other facilities shared with state and non-state secondary schools
- shared facilities with universities (such as QUT Caboolture or University of the Sunshine Coast)
- shared facilities with industry (such as Queensland Rail's training facility at Acacia Ridge).

TAFE Queensland and Central Queensland University are the primary users of the state's training infrastructure alongside Queensland's other public training providers Aviation Australia, the Aboriginal Centre for the Performing Arts and the Queensland Agricultural Training Colleges.

Within the 77 training sites owned or leased by the Queensland Government, there are four types of training facilities:

- a full campus: may offer trade and/or nontrade training and provides a full range of services including a customer services centre, library and canteen.
- training centre: may offer trade and/or nontrade training as well some services such as a customer service centre.
- specialised training centre: offers training for a specific industry or skill area (i.e. trades) from a full campus or training centre.
- learning hubs: a small training space generally co-located with other services (i.e. high school) or on leased premises.

Planning for the future

In 2019-20, the Government is committed to investing over \$105 million in infrastructure projects across Queensland as part of the long-term plan to revitalise the state's training portfolio.

From 2018 to 2021, significant investments will be made to modernise the Pimlico, Cairns, Mount Gravatt and Toowoomba training sites, and training infrastructure within the regions of the Gold Coast and Redlands.

While there have been periods of significant investment in the state's training infrastructure over the years, the majority of the state-owned facilities are decades old and were designed to meet the training needs at the time of construction. For some facilities, their age, location and changes in industry skills needs, have meant that they are no longer fit-for-purpose.

This regional infrastructure planning process is working to prepare the state's training facilities for future training needs, particularly in areas of projected population or employment growth and to respond to changing skills needs of industry. This includes ensuring infrastructure upgrades incorporate projected climate change data and take into account the skills and training needs as a result of global trends such as digital innovation, shifting markets, and the transition to a low carbon economy, which will significantly impact Queensland industries and employment.

TAFE Queensland currently occupy forty of the forty-seven State-owned sites. A number of these are earmarked to undergo master planning in the next few years to determine investment opportunities.

Logan regional overview

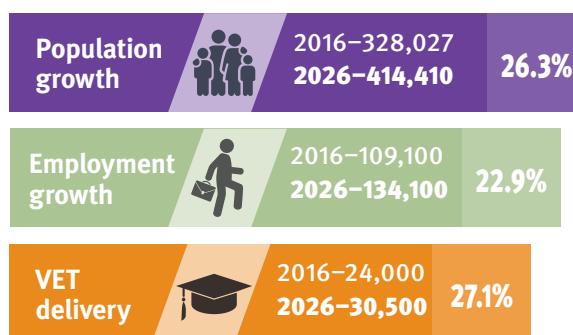
The Logan region includes Logan City Council and parts of the Scenic Rim Regional Council local government areas. Key economic drivers of output for the Logan region are construction, livestock, grains and other agriculture (mainly for the Scenic Rim area), manufacturing and property services¹.

Between 2016 and 2026², population in the Logan region is projected to grow significantly³. The Greater Flagstone and Yarrabilba Priority Development Areas will also have a major effect on the economy, providing residential capacity for an additional 170,000 people over the next 20 years.

Employment in the Logan region is projected to grow over the ten years to 2026⁴. The Jobs Queensland Anticipating Future Skills project⁵ forecasts the greatest employment changes to occur in the Logan Region by the year 2022 will be in the industries:

- health care and social assistance
- professional, scientific and technical services
- manufacturing
- retail trade
- education and training.

The impact of digital technologies and involvement in global value chains are driving changes in workforce composition and skills throughout Queensland, triggering a transition to a knowledge and services based economy. While mining remains one of the biggest economic contributors in the state in terms of output, service industries such as construction, health care and social assistance now contribute almost as much, and the workforce of the future will require higher levels of skills and different skill sets.⁶



Sources: QGSO population projections 2018 edition (medium series); Queensland Treasury employment projections 2016 (medium series) place of work - data sets adjusted to align with this region; State Training Agency Clearinghouse (STAC) Database 2017

The manufacturing sector is the largest employer in the region, which promotes employment in the associated transport, postal and warehousing industry.⁷

Significant projects⁸ likely to affect the region's short to medium term economic outlook and job opportunities include:

- additional classrooms and school upgrades – \$24.2 million
- expand and improve social housing – \$55.5 million
- Greenbank Bus Park'n'Ride upgrade – \$21 million
- Loganlea Train Station upgrade – \$19 million
- Mount Lindesay Highway intersection improvements – \$20 million
- new primary and secondary schools at Yarrabilba – \$82.6 million
- Pacific Motorway upgrades – \$939 million
- Waterford-Tamborine Road upgrade at Logan Village – \$39.5 million.

1 Reporting within this document for the Logan region is based on the Logan-Beaudesert Statistical Area 4 (SA4).

2 QGSO population projections 2018 edition (medium series).

3 Employment projections are based on the 2015 edition; the data set has been adjusted to 2016.

4 Queensland Treasury employment projections 2016 (medium series) place of work - data sets adjusted to align with this region.

5 Jobs Queensland reporting is based on the Logan-Beaudesert SA4 region.

6 Jobs Queensland: The Future of Work in Queensland to 2030 Discussion Paper -2019

7 Jobs Queensland: Anticipating Future Skills: Jobs growth and alternative futures for Queensland to 2022

8 Sourced from Regional Action Plans (Queensland Budget 2018-19) and State Infrastructure Plan (Part B: Program – 2018 update)

Training infrastructure in the Logan region

Within the Logan region, there are two TAFE Queensland campuses, at Loganlea and Browns Plains.

Training in the Logan region is predominantly non-trade training, with a particular focus on community services and health.

Loganlea TAFE is a full campus providing non-trade training in areas such as accounting, animal studies, beauty and hairdressing, business, community services, early childhood education, general education, health, hospitality, information technology, justice studies, and tourism and events. The campus features a range of specialist facilities for childcare, horticulture, health, and hospitality students.

Browns Plains TAFE is a learning hub specialising in general education and training.

Student training enrolments in the Logan region are projected to significantly increase over the 10 years to 2027.



This map is intended for general reference use only



Loganlea

The Loganlea TAFE site is a full TAFE Queensland campus offering comprehensive training across a range of study areas. It is located adjacent to the Logan Hospital and is within the Meadowbrook Master Plan precinct.

The Loganlea TAFE will form an integral part of the state's current master planning where the site is within the Health and Wellbeing Precinct.

The majority of training delivered at the campus is in the areas of community services, general education and training, and health, with primary industry enrolments including veterinary studies, also growing. Demand for community services training has increased in recent years reflecting the shifts in the region's workforce.





Future outlook

A collaborative planning process has occurred between Logan City Council, the Queensland Government, Logan Hospital and Griffith University, which has led to the alignment of the Meadowbrook Master Plan and Structure Plan with the Metro South Health Services Logan Hospital Master Plan. Current master planning is being conducted by the State to consider the interests of all stakeholders.

The site will receive investment to ensure that its facilities provide students with contemporary learning environments. The state government has allocated approximately \$8.3 million over the next two years to modernise the Loganlea TAFE campus, as well as to integrate its development into a health and training precinct including:

- upgrade nursing practical spaces to include observation rooms and viewing laboratories
- upgrade early childhood care training facilities
- modernise and expand existing animal science programs.

The campus has capacity to manage the expected growth and will continue to deliver training; however, there are opportunities to invest in the modernisation of the campus.

The campus will continue to be a vital part of the training portfolio by providing health and community services training, with opportunities for collaboration with other agencies.

Infrastructure plan: Loganlea

- Approximately \$8.3 million is proposed over the next two years to modernise the Loganlea campus and integrate its development into a health and training precinct. This will be undertaken in conjunction with the broader Meadowbrook master planning processes.

Browns Plains

The Browns Plains TAFE site is a small training centre that delivers general education and training under contractual arrangements with the Commonwealth Government for the delivery of English language and pre-employment training.

Located within the Browns Plains commercial centre and adjacent to the Grand Plaza shopping centre, the site has good access to social infrastructure and public transport.



Future outlook

The campus has ample capacity to manage growth and will continue to deliver training with an emphasis on English language and jobs skills training.

Continued partnership with the Australian Government will be maintained and there are opportunities to establish new partnerships with community and cultural groups in the area.

In the last two years, approximately \$250,000 was invested in maintenance at the campus with \$730,000 budgeted for capital and general maintenance over the next two years.

This campus will continue to deliver general education training and assist specialist migrant programs.

Infrastructure plan: Browns Plains

- \$730,000 is proposed for capital and general maintenance costs over the next two financial years.



Logan training infrastructure plan

The Logan region, from Meadowbrook to Loganholme, is a high growth area and a regional economic cluster within South East Queensland. This gives businesses in the region a competitive advantage, being serviced by passenger rail, the Logan Hospital, Griffith University Logan campus and the TAFE Queensland Loganlea campus. The area also has key trade industries in health and education and advanced manufacturing.

Within the Logan region, the proposed SEQ City Deals strategy will look to use the synergy of co-located assets including the Loganlea TAFE Queensland campus, the Logan Hospital, and the surrounding commercial centre, to reinvigorate

training and employment opportunities tailored to the specific needs of the region.

The specific programs and strategies will evolve through continued engagement between State and Commonwealth Government agencies, and the Logan City Council.

Integration into the Meadowbrook Health and Training Precinct is a high priority.

The state government will invest over \$9 million in the region over the next two years on both maintenance works and modernising of training facilities.

Summary of planned actions

Training infrastructure in the region is subject to master planning, with the Loganlea TAFE site to undergo further analysis during 2019.

All campuses in this region will be maintained with their current training emphasis.

Loganlea

- The campus has the capacity to manage the expected growth and will continue to deliver training with opportunities to invest in the modernisation of the campus.
- Approximately \$8.3 million is proposed over the next two years to modernise the Loganlea TAFE campus, and integrate its development into a health and training precinct. This will be undertaken in conjunction with the Meadowbrook master planning processes.

Browns Plains

- This campus will continue to deliver general education training and assist specialist migrant programs.
- \$730,000 is proposed for capital and general maintenance over the next two years.

desbt.qld.gov.au

Department of Employment, Small Business and Training

PO Box 15033

City East, Brisbane QLD 4002

Telephone: 13 QGOV (13 74 68)

Email: info@desbt.qld.gov.au