

Building future skills

A safe infrastructure plan for the Darling Downs



Copyright

This publication is protected by the Copyright Act 1968.

© State of Queensland, October 2019.



Licence

This work is licensed by the Department of Employment, Small Business and Training under the Creative Commons Attribution (CC BY) 4.0 International licence.

To view a copy of this licence, visit: <https://creativecommons.org/licenses/by/4.0/>

You are free to copy, communicate and adapt this publication, as long as you attribute appropriately, including:

- the name of the publication “Building future skills – A tafe infrastructure plan for Darling Downs”
- a link to the work if you have sourced it online
- the copyright licence statement above
- indicate if you have made changes to the work.

Minister's message



A key strength of Queensland's vocational education and training system is its commitment to giving students practical, hands-on skills developed in part, in purpose-built training facilities that mirror real world workplaces.

Investing in the delivery of high-quality training supported by a network of fit-for-purpose training infrastructure is essential to ensure Queenslanders have the skills they need to secure a job and progress their careers in our state's growing industries.

For our students, having access to state-of-the-art training facilities and equipment will ensure they are job ready. For our teachers and trainers, it will provide them with contemporary training spaces to ensure training delivery meets industry needs.

Across Queensland there are currently 77 sites owned or leased by the State Government and the public training providers for the delivery of vocational education and training.

This includes the network of TAFE Queensland and Central Queensland University campuses as well as sites utilised by the state's other public providers of training.

The Queensland Government has released the *Skills for Queensland – Great training for quality jobs* plan to secure our future prosperity through a skilled and adaptive workforce. More innovative and flexible training opportunities will give Queenslanders better access to skilling, reskilling and upskilling pathways to remain agile as jobs evolve.

The Government will invest more than \$105 million during 2019-20, in projects across Queensland as part of the long-term plan to revitalise the state's training portfolio. To compliment this program, over the next few years we have significant investments planned for the modernisation of Pimlico, Cairns, Mount Gravatt, Toowoomba, Alexandra Hills and the Ashmore and Southport sites at the Gold Coast.

As we deliver on this investment, we also need to plan for the training needs of all Queensland communities to ensure our investment in training facilities is going where it is needed and we are ready to support training delivery into the future.

This has led to the development of 14 regional plans that outline the Queensland Government's proposed investment in training infrastructure as well as strategies to provide access to relevant training spaces to meet local industry and community needs.

For the Darling Downs, this plan outlines the future for five TAFE Queensland campuses as well proposals to expand delivery to accessible, industry-relevant locations.

Central to this planning, is ensuring our training infrastructure can readily adapt to changing technology and industry advancements and complement a range of delivery options such as online learning and workplace-based training.

This plan outlines how we intend to provide the Darling Downs region with the training infrastructure it needs to skill its workforce for the future.

The Honourable Shannon Fentiman MP

Minister for Employment and Small Business
Minister for Training and Skills Development

Advancing Queensland's training infrastructure

Our current training footprint

Across the state, training is currently delivered from a range of training spaces including:

- state-owned training infrastructure
- leased, purpose-built training facilities workplaces
- trade training centres and other facilities shared with state and non-state secondary schools
- shared facilities with universities (such as QUT Caboolture or University of the Sunshine Coast)
- shared facilities with industry (such as Queensland Rail's training facility at Acacia Ridge).

TAFE Queensland and Central Queensland University are the primary users of the state's training infrastructure alongside Queensland's other public training providers Aviation Australia, the Aboriginal Centre for the Performing Arts and the Queensland Agricultural Training Colleges (QATC).

Within the 77 training sites owned or leased by the Queensland Government, there are four types of training facilities:

- a full campus: may offer trade and/or nontrade training and provides a full range of services including a customer services centre, library and canteen.
- training centre: may offer trade and/or nontrade training as well some services such as a customer service centre.
- specialised training centre: offers training for a specific industry or skill area (i.e. trades) from a full campus or training centre.
- learning hubs: a small training space generally co-located with other services (i.e. high school) or on leased premises.

Planning for the future

In 2019-20, the Government is committed to investing over \$105 million in infrastructure projects across Queensland as part of the long-term plan to revitalise the state's training portfolio.

From 2018 to 2021, significant investments will be made to modernise the Pimlico, Cairns, Mount Gravatt and Toowoomba training sites, and training infrastructure within the regions of the Gold Coast and Redlands.

While there have been periods of significant investment in the state's training infrastructure over the years, the majority of the state-owned facilities are decades old and were designed to meet the training needs at the time of construction. For some facilities, their age, location and changes in industry skills needs, have meant that they are no longer fit-for-purpose.

This regional infrastructure planning process is working to prepare the state's training facilities for future training needs, particularly in areas of projected population or employment growth and to respond to changing skills needs of industry. This includes ensuring infrastructure upgrades incorporate projected climate change data and take into account the skills and training needs as a result of global trends such as digital innovation, shifting markets, and the transition to a low carbon economy, which will significantly impact Queensland industries and employment.

TAFE Queensland currently occupy forty of the forty-seven State-owned sites. A number of these are earmarked to undergo master planning in the next few years to determine investment opportunities.

Darling Downs regional overview

The Darling Downs region encompasses parts of the local government areas of Balonne, Goondiwindi, Lockyer Valley, Maranoa, Southern Downs, Toowoomba and Western Downs¹.

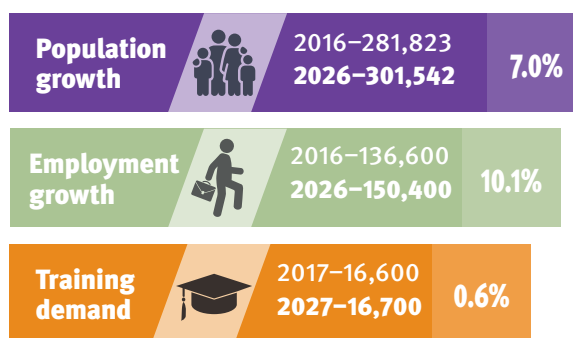
The wider Toowoomba region has expanded from being a substantial agricultural centre in Queensland, into a significant freight and distribution hub for road, rail and air. It is strategically located along the Melbourne-Brisbane freight route which provides Toowoomba with national road, air and rail links.

Between 2016 and 2026², population and employment in the region is projected to grow at a steady rate³.

The Jobs Queensland Anticipating Future Skills project⁴, forecasts the largest employment changes to occur in the Darling Downs region by 2022 will be in the following industries:

- health care and social assistance
- manufacturing
- professional, scientific and technical services
- agriculture, forestry and fishing
- transport, postal and warehousing.

Whilst employment in education and training and public administration and safety is also projected to grow, it will not be as significant as other growth industries.



Sources: QGSO population projections 2018 edition (medium series); Queensland Treasury employment projections 2016 (medium series) place of work – data sets adjusted to align with this region; State Training Agency Clearinghouse (STAC) Database 2017

The impact of digital technologies and involvement in global value chains are driving changes in workforce composition and skills throughout Queensland, triggering a transition to a knowledge and services based economy. While mining remains one of the biggest economic contributors in the state in terms of output, service industries such as construction, health care and social assistance now contribute almost as much, and the workforce of the future will require higher levels of skills and different skill sets.⁵

Significant projects likely to affect the region's short to medium term economic outlook and job opportunities include⁶:

- Carnarvon Highway upgrades – \$16.5 million
- Charlton fire and rescue services upgrade – \$10.6 million
- new school buildings including classrooms – \$36.5 million
- Roma Hospital redevelopment – \$90.4 million
- Warrego Highway upgrades – \$91 million.

1 Reporting within this document for the Darling Downs region is based on the following Statistical Area 4 (SA4) regions: Darling Downs (West) – Maranoa, Darling Downs – East, Granite Belt, and Toowoomba.

2 QGSO population projections 2018 edition (medium series), employment projections 2015 edition (medium series) data sets were adjusted to align with this tafe planning region

3 Employment projections are based on the 2015 edition; the data set has been adjusted to 2016.

4 Jobs Queensland reporting is based on the Darling Downs-Toowoomba SA4 region.

5 Jobs Queensland: The Future of Work in Queensland to 2030 Discussion Paper -2019

6 Sourced from Regional Action Plans (Queensland Budget 2018-19) and State Infrastructure Plan (Part B: Program – 2018 update)

Training infrastructure in the Darling Downs

Within the Darling Downs region, there are five TAFE Queensland campuses at Roma, Chinchilla, Dalby, Toowoomba and Warwick.

Queensland Agricultural Training Colleges also deliver specialised training in the region, from a training hub in Dalby.

Roma TAFE campus is a training centre offering courses across a number of key industry areas including aged care, agriculture, business, childcare, building and construction, cookery, crime and justice, engineering, English language studies, first aid, hospitality, and nursing.

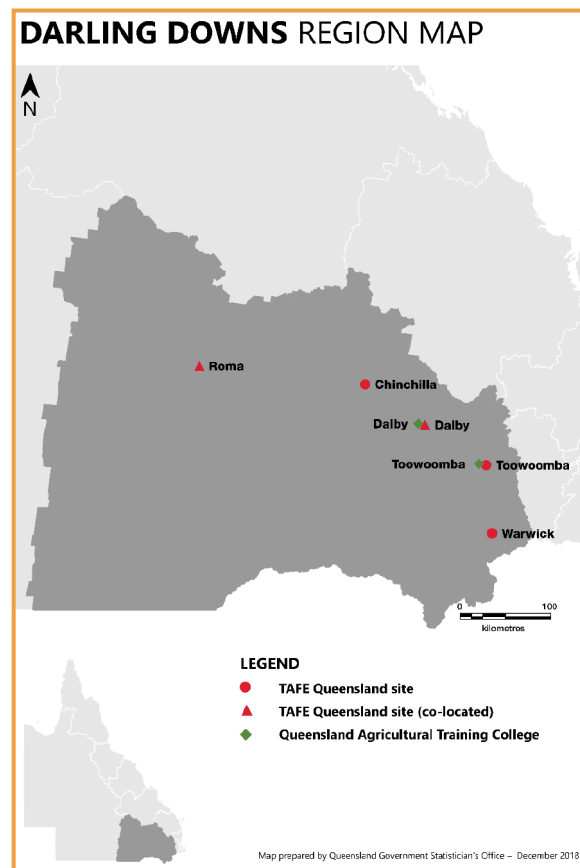
Chinchilla TAFE is a learning hub offering training relevant to the main industries in the local area including agriculture and resources. It also offers courses in building and construction, business, crime and justice, first aid, general education, and hospitality with delivery strengths in tourism, business and trade trading.

Dalby TAFE is a leased site offering courses in a number of study areas including aged care, agriculture, automotive, crime and justice, childcare, engineering, first aid, general education and hospitality. It includes fully equipped trade workshops for automotive and engineering students.

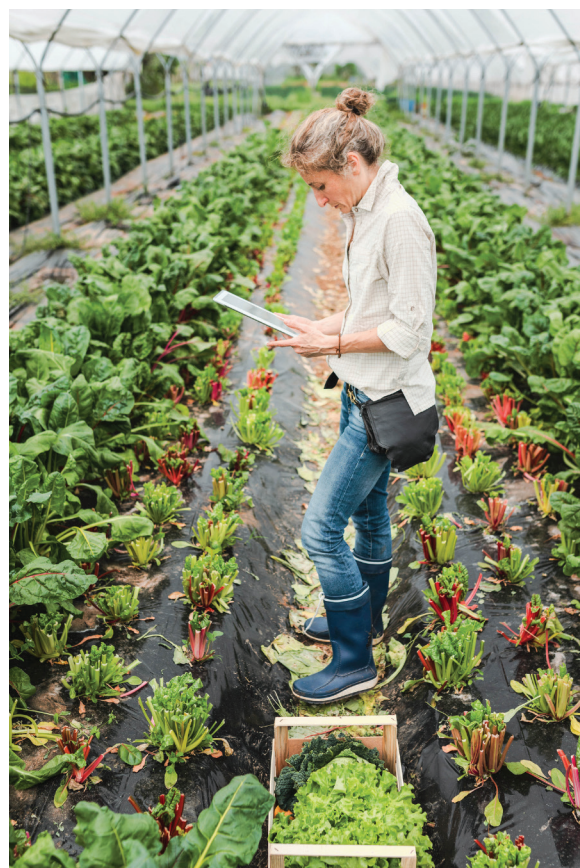
Toowoomba TAFE is a full campus with state-of-the-art training facilities that simulate real workplaces. It offers a comprehensive range of study options including aged care, agriculture, automotive, building, business, child care, community services, crime and justice, electrotechnology, engineering, general education, graphic design, hairdressing and beauty, horticulture, hospitality and cookery, IT, nursing, photography, and resources and mining.

Warwick TAFE is a training centre offering courses across a range of study areas including aged care, agriculture, automotive, business, engineering, childcare, cookery, first aid, general education, nursing, and hospitality.

Demand for general education and training in the region has remained high over the period from 2015-16 to 2017-18, with significant increases in health and construction enrolments across the region.



This map is intended for general reference use only



Roma

The Roma TAFE campus provides both trade and non-trade training. Health related training at Roma TAFE has almost tripled in the last three years with a high volume of enrolments in health-related courses.

There is an opportunity to develop additional partnerships with external groups and industry to support the expected growth in the region and campus.

Approximately \$200,000 was invested in maintenance over the last two years with over \$300,000 budgeted for further general maintenance works over the next two years. Approximately \$430,000 in capital investment is budgeted for a range of upgrade works to provide students with a modern, flexible and safe learning environment over the next two years.

Future outlook

The Roma TAFE site is well placed to meet current training needs and will retain both trade and non-trade training delivery functions, with a renewed emphasis on health training. Investment will be directed to ensure modern, fit-for-purpose facilities.

Infrastructure plan: Roma

- Approximately \$730,000 in capital and maintenance investment is budgeted over 2019-20 and 2020-21 for a range of modernisation works to provide students with a modern, flexible and safe working environment.



Chinchilla

The Chinchilla TAFE learning hub is a detached building, adjacent to the Chinchilla State High School.

Enrolments at this campus have increased significantly across most training areas, especially in construction, utilities and health.



Future outlook

There is an opportunity to develop the relationship with the Chinchilla State High School to maximise the benefits to students from the 'Free tafe for year 12 graduates' program. New partnerships with local health providers could be explored to support the trend of increasing enrolments in health-related courses.

The campus has capacity to manage expected growth and will continue to deliver training specific to the community's needs and is fit-for-purpose.

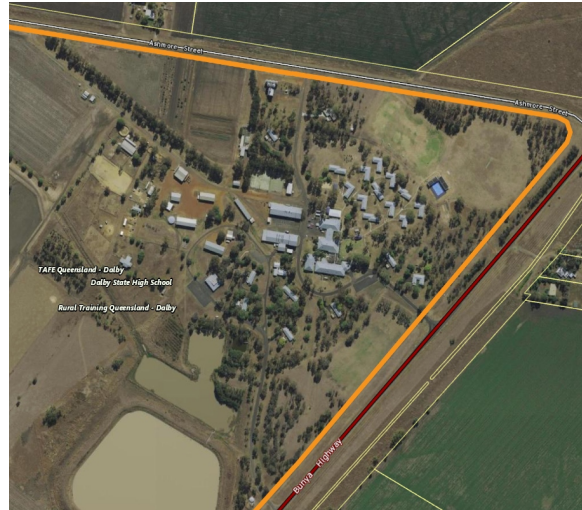
Infrastructure plan: Chinchilla

- Approximately \$150,000 is budgeted over the next two years mainly for general maintenance.

Dalby (Bunya campus)

The Bunya TAFE campus is co-located at the Dalby State High School and provides training mainly in health, engineering and trade training.

As the site is leased by TAFE Queensland, there is no associated maintenance or capital costs, however continued investment is planned for modernisation of equipment and facilities.



Future outlook

Continued development of partnerships with local industry is recommended to facilitate industry placements for students where appropriate, to ensure they are job-ready when entering the work force.

The site has the flexibility to adapt to future skills and the needs of the local community and is considered fit-for-purpose.

Infrastructure plan: Dalby

- The site is leased by TAFE Queensland and ongoing modernisation of equipment and facilities is envisaged.

Toowoomba

The Toowoomba TAFE campus is the main training and administrative campus for the Darling Downs region and plays an important role in supporting a diversifying and growing local and regional economy.

The site is in reasonable condition with more than \$7 million being invested throughout 2018-19 and 2019-20 to revitalise the campus. The project includes modernised health and clinical spaces, and a new Rural Centre of Excellence. Over the next two years, an additional \$2.3 million is budgeted for additional capital works, and \$2.26 million for maintenance works, to continue to modernise and upgrade the campuses training facilities.



Significant works are currently underway to modernise the campus, including:

- Development of the Rural Centre of Excellence (O Block): This will facilitate synergies between existing horticultural training and the future agricultural requirements of the region, and create a food and fibre precinct supporting modern teaching environments, multi-use spaces and contemporary laboratory and testing rooms.

- A refurbished B Block will provide contemporary teaching environments with modernised health and clinical spaces fully equipped for current and future pedagogical technologies.
- Any surplus land will be retained for the site's contribution to social and community infrastructure in Toowoomba.

Future outlook

There are significant opportunities to build relationships and form partnerships with industry groups in the health, hospitality and agricultural industries in the region.

The campus has the capacity for the projected training demand and with continued investment it will ensure modern flexible learning facilities for future training demand.

Infrastructure plan: Toowoomba

- The site is in reasonable condition with more than \$7 million being invested throughout 2018-19 and 2019-20, to revitalise the campus.
- An additional \$2.3 million is budgeted for additional capital works to upgrade the campuses training facilities.
- Approximately \$2.26 million is budgeted for maintenance works over the next two years

Warwick

The Warwick TAFE campus provides both trade and non-trade training, with steady enrolment growth across both areas. The largest cohort of students is in automotive, with substantial growth recorded in community services and construction areas.



Approximately \$170,000 was invested in maintenance over the last two years, with approximately \$440,000 budgeted for maintenance works and capital upgrades for the next two years. Approximately \$2.2 million is budgeted for the potential redevelopment of the campus with redevelopment to occur over two stages, including a feasibility study to determine the preferred refurbishment option for the aging facilities followed by a construction program for refurbishment works.

Future outlook

Whilst the size and scale of the Warwick TAFE site exceeds projected need, it is well placed to meet current training needs and will retain both trade and non-trade training delivery functions.

Infrastructure plan:

Warwick

- Almost \$440,000 is proposed for maintenance works and general upgrades over the next two years.
- Approximately \$2.2 million is proposed for the redevelopment of the campus over two stages, which will include master planning of the site to determine potential options for training in the region.



Future Darling Downs infrastructure plan

Priority investment has been identified for the Toowoomba TAFE campus as the main training hub of the region with future capital investment for the Warwick, Roma, Dalby and Chinchilla sites to ensure continued training delivery in line with existing and future local industry needs. A specific focus is catering to the increased demand for health and community services training to meet the needs of the region's aging population.

Investment in the Toowoomba TAFE site is a priority to revitalise the campus and provide high quality training facilities for a growing community. Significant investments will refresh the campus, upgrading the existing nursing simulation ward space in B Block, redeveloping the lower-ground level of B Block for flexible learning areas, and creating a new horticultural area (O Block) – the Rural Centre of Excellence.

The Warwick TAFE site is located on the fringe of the Warwick town centre. The campus has a strong demand for automotive training to support the local economy, however its size and scale is greater than required for projected training demand.

Training requirements for Chinchilla and surrounding areas are currently met through online delivery and delivery through industry partnerships with support from the Roma TAFE and Toowoomba TAFE campuses. The Chinchilla TAFE campus is a detached building which will be considered for re-purposing in line with current and future training demand in the area.

With the region's economy largely based on energy, mining, and agriculture, it is appropriate that further investigation occur for training strategies for all sites.

Summary of planned actions

Significant investments for the Toowoomba TAFE site commenced in 2018. All TAFE campuses in this region will be maintained with their current training emphasis in the short term.

Roma

- Over \$730,000 capital and maintenance investment is proposed for a range of modernisation works to retain both trade and non-trade training delivery functions, with a renewed emphasis on health training.

Chinchilla

- The site is fit for purpose and approximately \$150,000 will be spent over the next two years on general maintenance. The campus has the capacity to manage the expected growth and will continue to deliver training specific to the community's needs.

Dalby

- The site is leased by TAFE Queensland and continued investment will be for modernisation of equipment and facilities. It is considered fit-for-purpose and will continue with an emphasis on trade training, engineering and health related studies.

Toowoomba

- The site is in reasonable condition with more than \$7 million being invested throughout 2018-19 and 2019-20, to revitalise the campus, including a refurbished B Block with modernised health and clinical spaces, and the development of a new O Block for a Rural Centre of Excellence. An additional \$2.3 million is budgeted for additional capital works to continue to modernise and upgrade the campuses training facilities.
- Approximately \$2.26 million is budgeted for maintenance works over the next two years.

Warwick

- Approximately \$440,000 is proposed for maintenance works for the next two years.
- Approximately \$2.2 million is proposed for the potential redevelopment of the campus, which will include further analysis of the site to determine potential options for training in the region. This may include training with a focus on renewable energy.

desbt.qld.gov.au

Department of Employment, Small Business and Training

PO Box 15033

City East, Brisbane QLD 4002

Telephone: 13 QGOV (13 74 68)

Email: info@desbt.qld.gov.au