

Building future skills

A tafe infrastructure plan for Brisbane South



Copyright

This publication is protected by the Copyright Act 1968.

© State of Queensland, October 2019.



Licence

This work is licensed by the Department of Employment, Small Business and Training under the Creative Commons Attribution (CC BY) 4.0 International licence.

To view a copy of this licence, visit: <https://creativecommons.org/licenses/by/4.0/>

You are free to copy, communicate and adapt this publication, as long as you attribute appropriately, including:

- the name of the publication “Building future skills – A tafe infrastructure plan for Brisbane South”
- a link to the work if you have sourced it online
- the copyright licence statement above
- indicate if you have made changes to the work.

Minister's message



A key strength of Queensland's vocational education and training system is its commitment to giving students practical, hands-on skills developed in part, in purpose-built training facilities that mirror real world workplaces.

Investing in the delivery of high-quality training supported by a network of fit-for-purpose training infrastructure is essential to ensure Queenslanders have the skills they need to secure a job and progress their careers in our state's growing industries.

For our students, having access to state-of-the-art training facilities and equipment will ensure they are job ready. For our teachers and trainers, it will provide them with contemporary training spaces to ensure training delivery meets industry needs.

Across Queensland there are currently 77 sites owned or leased by the State Government and the public training providers for the delivery of vocational education and training.

This includes the network of TAFE Queensland and Central Queensland University campuses as well as sites utilised by the state's other public providers of training.

The Queensland Government has released the *Skills for Queensland – Great training for quality jobs* plan to secure our future prosperity through a skilled and adaptive workforce. More innovative and flexible training opportunities will give Queenslanders better access to skilling, reskilling and upskilling pathways to remain agile as jobs evolve.

The Government will invest more than \$105 million during 2019-20, in projects across Queensland as part of the long-term plan to revitalise the state's training portfolio. To complement this program, over the next few years we have significant investments planned for the modernisation of Pimlico, Cairns, Mount Gravatt, Toowoomba, Alexandra Hills and the Ashmore and Southport sites at the Gold Coast.

As we deliver on this investment, we also need to plan for the training needs of all Queensland communities to ensure our investment in training facilities is going where it is needed and we are ready to support training delivery into the future.

This has led to the development of 14 regional plans that outline the Queensland Government's proposed investment in training infrastructure as well as strategies to provide access to relevant training spaces to meet local industry and community needs.

For the Brisbane South region, this plan outlines the future for three TAFE Queensland campuses located at South Bank, Acacia Ridge and Mt Gravatt.

Central to this planning, is ensuring training infrastructure can readily adapt to changing technology and industry advancements and work hand-in-hand with a range of delivery options such as online learning and workplace-based training.

This plan outlines how we intend to provide the Brisbane South region with the training infrastructure it needs to skill its workforce for the future.

The Honourable Shannon Fentiman MP

Minister for Employment and Small Business
Minister for Training and Skills Development

Advancing Queensland's training infrastructure

Our current training footprint

Across the state, training is currently delivered from a range of training spaces including:

- state-owned training infrastructure
- leased, purpose-built training facilities
- workplaces
- trade training centres and other facilities shared with state and non-state secondary schools
- shared facilities with universities (such as QUT Caboolture and the University of the Sunshine Coast)
- shared facilities with industry (such as Queensland Rail's training facility at Acacia Ridge).

TAFE Queensland and Central Queensland University are the primary users of the state's training infrastructure alongside Queensland's other public training providers Aviation Australia and the Aboriginal Centre for the Performing Arts.

Within the 77 training sites owned or leased by the Queensland Government, there are four types of training facilities:

- a full campus: may offer trade and/or nontrade training and provides a full range of services including a customer services centre, library and canteen.
- training centre: may offer trade and/or nontrade training as well some services such as a customer service centre.
- specialised training centre: offers training for a specific industry or skill area (i.e. trades) from a full campus or training centre.
- learning hubs: a small training space generally co-located with other services (i.e. high school) or on leased premises.

Planning for the future

In 2019-20, the Government is committed to investing over \$105 million in infrastructure projects across Queensland as part of the long-term plan to revitalise the state's training portfolio.

From 2018 to 2021, significant investments will be made to modernise the Pimlico, Cairns, Mount Gravatt and Toowoomba training sites, and training infrastructure within the regions of the Gold Coast and Redlands.

While there have been periods of significant investment in the state's training infrastructure over the years, the majority of the state-owned facilities are decades old and were designed to meet the training needs at the time of construction. For some facilities, their age, location and changes in industry skills needs, have meant that they are no longer fit-for-purpose.

This regional infrastructure planning process is working to prepare the state's training facilities for future training needs, particularly in areas of projected population or employment growth and to respond to changing skills needs of industry. This includes ensuring infrastructure upgrades incorporate projected climate change data and take into account the skills and training needs as a result of global trends such as digital innovation, shifting markets, and the transition to a low carbon economy, which will significantly impact Queensland industries and employment.

TAFE Queensland currently occupy forty of the forty-seven State-owned sites. A number of these are earmarked to undergo master planning in the next few years to determine investment opportunities.

Brisbane South regional overview

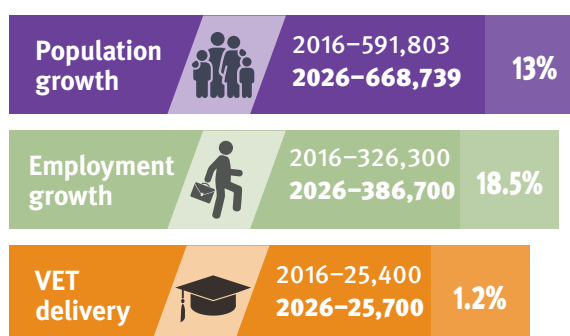
The Brisbane South region¹ encompasses land within the Brisbane City Council area, south of the Brisbane River. The area incorporates one of Queensland's major health hubs, including major hospital and health care services.

Between 2016 and 2026, population and employment in the Brisbane South region is projected to grow steadily².

The Jobs Queensland Anticipating Future Skills project³ forecasts that the largest employment changes to occur in the Brisbane region by the year 2022 will be in the following industries:

- health care and social assistance
- professional, scientific and technical services
- education and training
- transport
- postal and warehousing
- manufacturing.

The impact of digital technologies and involvement in global value chains are driving changes in workforce composition and skills throughout Queensland, triggering a transition to a knowledge- and services-based economy. While mining remains one of the biggest economic contributors in the state in terms of output, service industries such as construction, health care and social assistance now contribute almost as much, and the workforce of the future will require higher levels of skills and different skill sets.⁴



Sources: QGSO population projections 2018 edition (medium series); Queensland Treasury employment projections 2016 (medium series) place of work – data sets adjusted to align with this region; State Training Agency Clearinghouse (STAC) Database 2017

Investment in significant projects likely to affect the region's short to medium term economic outlook and job opportunities include⁵:

- Centenary Motorway upgrade – \$65 million
- Cross River Rail – \$5.4 billion commitment
- Eastern Transitway – \$22 million
- Princess Alexandra Hospital maintenance – \$45.5 million
- new performing arts venue at South Brisbane – \$150 million
- additional classrooms at Stretton State College – \$14.5 million
- Thomas Dixon Centre at West End – \$14 million
- Yeerongpilly Green Transit Oriented Development – \$71.4 million.

Other major projects include Brisbane Metro, Brisbane Quarter, Queens Wharf, and Brisbane Airport redevelopment.

1 Reporting within this document for the Brisbane South region is based on the following Statistical Area 3 (SA3) regions: Brisbane Inner-East, Carindale, Holland Park-Yeronga, Mt Gravatt, Nathan, Rocklea-Acacia Ridge, Sunnybank, Centenary, Sherwood-Indooroopilly, and Wynnum-Manly and Statistical Area 2 (SA2) regions: Highgate hill, Kangaroo Point, South Brisbane, and West End

2 Queensland Treasury employment projections 2016 (medium series) place of work – data sets adjusted to align with this region

3 Jobs Queensland reporting is based on the following SA4 regions: Brisbane Inner City, Brisbane-East, Brisbane-North, Brisbane-South, and Brisbane-West

4 Jobs Queensland: The Future of Work in Queensland to 2030 Discussion Paper – 2019

5 Sourced from Regional Action Plans (Queensland Budget 2018-19) and State Infrastructure Plan (Part B: Program – 2018 update)

Training infrastructure in Brisbane South

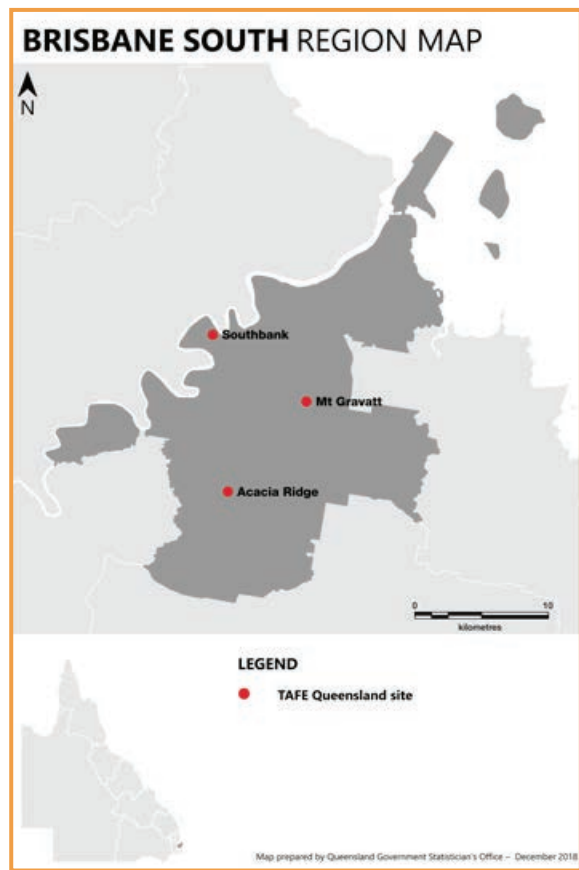
The Brisbane South region encompasses three TAFE Queensland sites at South Bank, Acacia Ridge and Mount Gravatt.

South Bank TAFE is a full campus and the largest in Queensland. The campus delivers a comprehensive range of study options from certificate to advanced diploma including beauty and hairdressing, business and justice, child care, community services, engineering, general education and training, health and hospitality.

Mount Gravatt TAFE is a full campus offering predominately nontrade training and specialises in fashion design and horticulture. It also offers training in other areas such as business, education support, English language studies, hospitality, and screen and media.

Acacia Ridge TAFE is a specialised trade training centre of excellence offering training in a broad range of trades including automotive, building and construction, plumbing, refrigeration, electrotechnology, engineering, manufacturing and design, resources and mining, transport, and utilities.

Demand for general education and training in the region remained high over the period from 2015-16 to 2017-18, with significant increases in hospitality, textile clothing and footwear, arts and entertainment, automotive, construction, and utilities sectors.



This map is intended for general reference use only



South Bank

The TAFE Queensland South Bank campus has the highest enrolments of any training facility in Queensland and has experienced steady growth in student enrolments.

The campus offers a range of study areas and features purpose-built training facilities to allow for hands-on training. It is centrally located close to public transport, restaurants and accommodation.

It was developed through a public private partnership which has attracted an investment of over \$550 million since commencement in 2005.

There has been a significant increase in general education and training, communications, furnishing, textile clothing and footwear, hospitality and tourism over the last three years.

The campus has excellent relationships and partnerships with external groups and industry, including in the areas of health, hospitality, creative arts and higher education.



Future outlook

As TAFE Queensland's flagship campus, South Bank is a fit-for-purpose facility that is strategic to the future of training in Queensland due to its excellent condition. Investment is needed to ensure the site is maintained to this high standard.

Infrastructure plan: South Bank

- South Bank campus was redeveloped through a public private partnership. Under this arrangement the state government invests annually to maintain the modern teaching facilities.
- A \$3.7 million TAFE Queensland partnership with Le Cordon Bleu has seen two state of the art training kitchens open at South Bank in March 2019.



Mount Gravatt

The TAFE Queensland Mount Gravatt campus is well located for training delivery situated on a key north-south traffic route and within 10km to the Brisbane CBD. The area is projected to experience population growth over the next 20 years. The site currently offers nontrade training with a wide range of study options and features the Fashion Centre of Excellence where a range of applied fashion design and millinery courses are available.

The campus previously provided a wide range of both trade and nontrade qualifications, however, many nontrades programs were relocated to South Bank when built and all trades moved to the larger Acacia Ridge TAFE campus.

In recent years the Mount Gravatt TAFE campus has transformed to become a leader in Queensland for fashion design and creative arts.

\$2.5 million has been expended in 2018-19 for the refurbishment of A Block to accommodate new TAFE Queensland corporate offices.

The Government is working with social enterprises to locate a new cross-sectorial project office in a vacant building at the site dedicated to providing meaningful employment to vulnerable jobseekers.



Future outlook

In 2019-20, \$15 million will be invested at this site. Master planning has concluded which recommended options for better utilisation of the site and potential areas of investment to modernise the campus. The investments will target the progression of the Fashion Centre of Excellence precinct, as well as improvements to the campus experience through upgrades to the cafeteria, way finding improvements, and new security cameras and pedestrian lighting for safety. Additional options analysis and planning is underway to determine investment options to further develop the campus, including an opportunity to create Queensland's first DesignTech precinct in a TAFE setting.

In addition to this, a further \$2.62 million in capital projects is allocated to other complementary site improvements over the next two years.

This investment will position the site as a contemporary nontrades training delivery campus and as a key partner campus to South Bank.

There is also opportunity to build on existing relationships, an example being the United Kingdom fashion and textiles study abroad program which allowed students to visit London in 2018 and meet with international partners of TAFE Queensland.

Infrastructure plan: Mt Gravatt

- On average \$600,000 is budgeted annually for maintenance works.
- In 2019-20 and 2020-21, up to \$17.62 million will be invested at the site.

Acacia Ridge

Acacia Ridge TAFE is TAFE Queensland's lead trade training facility and is located within a key employment and population precinct. The Acacia Ridge TAFE campus has been subject to significant investment from the Queensland Government over the past ten years to become the flagship for trade training in South East Queensland.

The facility has particularly high enrolment numbers in the industry areas of construction and electrotechnology with automotive, engineering and general education also featuring.

Over the last two years, approximately \$2 million has been invested in general maintenance and capital works.

There are existing partnerships at the campus including Queensland Rail for the Rail Centre of Excellence, opened in 2016.



Future outlook

The Acacia Ridge TAFE campus has experienced a steady enrolment increase over the last three years, with enrolments remaining very high with over 10,000 students. The campus has sufficient capacity to be developed to accommodate growth in population and training. To ensure that it can keep pace with skills and training requirements for new and emerging technical industries, the government will continue to invest in the site.

An additional \$1.8 million is budgeted for further maintenance works over the coming two years. \$16 million in capital projects will be delivered in the next two years for roof replacement works and a new Heavy Plant (automotive) Centre of Excellence.

There are opportunities to facilitate and develop further partnerships with local industry to ensure that students are workforce ready upon completion of their training.

Infrastructure plan: Acacia Ridge

- \$1.8 million is proposed for further maintenance works over the coming two years for the site to continue as a state-of-the-art facility.
- \$16 million in capital projects are proposed for delivery in the next two years for roof replacement works and a new Heavy Plant (automotive) Centre of Excellence.



Brisbane South training infrastructure plan

The South Bank and Acacia Ridge TAFE campuses are well located, in excellent condition, and fit-for-purpose, while the Mount Gravatt TAFE campus requires significant investment.

Detailed planning and investment analysis is being undertaken for the Mount Gravatt TAFE site with a significant investment of \$15 million allocated for the next two years in addition to the annual capital program.

The Mount Gravatt TAFE site is underutilised for training uses, which presents an opportunity for revitalisation of existing training and potential to support new training delivery on this site.

Its proximity to public/active transport, populated residential areas and the Brisbane CBD, its links to protected green spaces and parks, and the demographic of the area put this site in an excellent position to transform the campus from a training only facility into a vibrant community space that supports and enhances the training experience for students.

Other initiatives will also be considered for the Mt Gravatt TAFE campus to expand the social infrastructure available to the local community. These could include uses such as Youth Foyers and Urban Education Villages, in collaboration with other state government agencies.

Summary of planned actions

Training infrastructure investments in the region include significant government investment for the Mount Gravatt TAFE site, commencing in 2019. All campuses in the region will be maintained with their current training emphasis.

South Bank

- The campus is TAFE Queensland's flagship campus and is considered fit-for-purpose.
- The campus was redeveloped through a public private partnership. Under that arrangement the state government invests funding annually to maintain the modern teaching facilities.

Mount Gravatt

- On average \$600,000 is proposed annually for maintenance works.
- Up to \$15 million will be invested at the site over the next two years, which will position the site as a contemporary nontrades training delivery campus.
- In addition to this, a further \$2.62 in capital projects is budgeted towards site improvements.

Acacia Ridge

- Acacia Ridge is TAFE Queensland's lead trade training facility and has the capacity to manage further growth in population and training.
- \$1.8 million is proposed for further maintenance works over the coming two years to continue as a state-of-the-art facility.
- \$16 million in capital projects are proposed for delivery in the next two years, including roof replacement works and a new Heavy Plant (automotive) Centre of Excellence.

desbt.qld.gov.au

Department of Employment, Small Business and Training

PO Box 15033

City East, Brisbane QLD 4002

Telephone: 13 QGOV (13 74 68)

Email: info@desbt.qld.gov.au