

Building future skills

A tafe infrastructure plan for Townsville



Copyright

This publication is protected by the Copyright Act 1968.

© State of Queensland, October 2019.



Licence

This work is licensed by the Department of Employment, Small Business and Training under the Creative Commons Attribution (CC BY) 4.0 International licence.

To view a copy of this licence, visit: <https://creativecommons.org/licenses/by/4.0/>

You are free to copy, communicate and adapt this publication, as long as you attribute appropriately, including:

- the name of the publication “Building future skills – A tafe infrastructure plan for Townsville”
- a link to the work if you have sourced it online
- the copyright licence statement above
- indicate if you have made changes to the work.

Minister's message



A key strength of Queensland's vocational education and training system is its commitment to giving students practical, hands-on skills developed in part, in purpose-built training facilities that mirror real world workplaces.

Investing in the delivery of high-quality training supported by a network of fit-for-purpose training infrastructure is essential to ensure Queenslanders have the skills they need to secure a job and progress their careers in our state's growing industries.

For our students, having access to state-of-the-art training facilities and equipment will ensure they are job ready. For our teachers and trainers, it will provide them with contemporary training spaces to ensure training delivery meets industry needs.

Across Queensland there are currently 77 sites owned or leased by the state government and the public training providers for the delivery of vocational education and training. This includes the network of TAFE Queensland and Central Queensland University campuses as well as sites utilised by the state's other public providers of training.

The Queensland Government has released the *Skills for Queensland - Great training for quality jobs* plan to secure our future prosperity through a skilled and adaptive workforce. More innovative and flexible training opportunities will give Queenslanders better access to skilling, reskilling and upskilling pathways to remain agile as jobs evolve.

The Government will invest more than \$105 million during 2019-20, in projects across Queensland as part of the long-term plan to revitalise the state's training portfolio. To complement this program, over the next few years we have significant investments planned for the modernisation of Pimlico, Cairns, Mount Gravatt, Toowoomba, Alexandra Hills and the Ashmore and Southport sites at the Gold Coast.

As we deliver on this investment, we also need to plan for the training needs of all Queensland communities to ensure our investment in training facilities is going where it is needed and we are ready to support training delivery into the future.

This has led to the development of 14 regional plans that outline the Queensland Government's proposed investment in training infrastructure as well as strategies to provide access to relevant training spaces to meet local industry and community needs.

Townsville is a diverse region with significant opportunities to build upon existing training assets to take advantage of the growing economy.

For the Townsville region, this plan outlines the future for seven TAFE campuses at Pimlico, Bohle and Aitkenvale in Townsville as well as sites at Charters Towers, Palm Island, Burdekin and Ingham.

Central to this planning, is ensuring our training infrastructure can readily adapt to changing technology and industry advancements and complement a range of delivery options such as online learning and workplace-based training.

This plan outlines how we intend to provide the Townsville region with the training infrastructure it needs to skill its workforce for the future.

The Honourable Shannon Fentiman MP

Minister for Employment and Small Business

Minister for Training and Skills Development

Advancing Queensland's training infrastructure

Our current training footprint

Across the state, training is currently delivered from a range of training spaces including:

- state-owned training infrastructure
- leased, purpose-built training facilities
- workplaces
- trade training centres and other facilities shared with state and non-state secondary schools
- shared facilities with universities (such as QUT Caboolture or University of the Sunshine Coast)
- shared facilities with industry (such as Queensland Rail's training facility at Acacia Ridge).

TAFE Queensland and Central Queensland University are the primary users of the state's training infrastructure alongside Queensland's other public training providers Aviation Australia, the Aboriginal Centre for the Performing Arts and the Queensland Agricultural Training Colleges.

Within the 77 training sites owned or leased by the Queensland Government, there are four types of training facilities:

- a full campus: may offer trade and/or non-trade training and provides a full range of services including a customer services centre, library and canteen.
- training centre: may offer trade and/or non-trade training as well some services such as a customer service centre.
- specialised training centre: offers training for a specific industry or skill area (i.e. trades) from a full campus or training centre.
- learning hubs: a small training space generally co-located with other services (i.e. high school) or on leased premises.

Planning for the future

In 2019-20, the Government is committed to investing over \$105 million in infrastructure projects across Queensland as part of the long-term plan to revitalise the state's training portfolio.

From 2018 to 2021, significant investments will be made to modernise the Pimlico, Cairns, Mount Gravatt and Toowoomba training sites, and training infrastructure within the regions of the Gold Coast and Redlands.

While there have been periods of significant investment in the state's training infrastructure over the years, the majority of the state-owned facilities are decades old and were designed to meet the training needs at the time of construction. For some facilities, their age, location and changes in industry skills needs, have meant that they are no longer fit-for-purpose.

This regional infrastructure planning process is working to prepare the state's training facilities for future training needs, particularly in areas of projected population or employment growth and to respond to changing skills needs of industry. This includes ensuring infrastructure upgrades incorporate projected climate change data and take into account the skills and training needs as a result of global trends such as digital innovation, shifting markets, and the transition to a low carbon economy, which will significantly impact Queensland industries and employment.

TAFE Queensland currently occupy forty of the forty-seven State-owned sites. A number of these are earmarked to undergo master planning in the next few years to determine investment opportunities.

Townsville regional overview

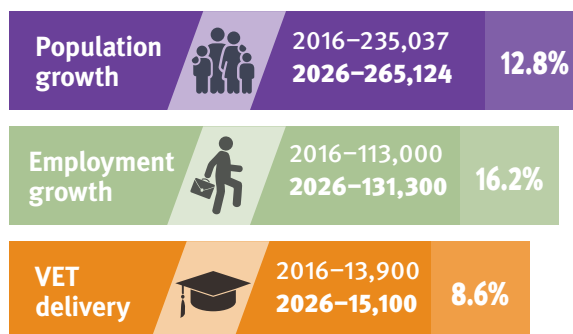
The Townsville region¹ encompasses the local government areas of Townsville City, Charters Towers, Hinchinbrook, Palm Island and Burdekin. Between 2016 and 2026, population and employment in the Townsville region is projected to grow steadily²³.

The Jobs Queensland Anticipating Future Skills⁴ project, forecasts that the greatest employment changes to occur in the Townsville region by the year 2022 will be in the following industries:

- health care and social assistance
- professional, scientific and technical services
- education and training
- transport, postal and warehousing
- public administration and safety.

Employment in construction and administrative and support services is also projected to grow.

The impact of digital technologies and involvement in global value chains are driving changes in workforce composition and skills throughout Queensland, triggering a transition to a knowledge and services based economy. While mining remains one of the biggest economic contributors in the state in terms of output, service industries such as construction, health care and social assistance now contribute almost as much, and the workforce of the future will require higher levels of skills and different skill sets.⁵ The employment profile of the Townsville region is diverse, with the industries of health care and social assistance, retail, education and training, public administration and safety, and accommodation and food services comprising the largest employers.⁶



Sources: QGSO population projections 2018 edition (medium series); Queensland Treasury employment projections 2016 (medium series) place of work - data sets adjusted to align with this region; State Training Agency Clearinghouse (STAC) Database 2017

Significant projects⁷ likely to affect the region's short to medium term economic outlook and job opportunities includes:

- Bruce Highway upgrades – \$640.7 million
- Flinders Highway upgrades – \$17 million
- support for the Great Barrier Reef – \$330 million
- Gregory Developmental Road widening – \$42.3 million
- new state school at North Shore – \$41.8 million
- North Queensland Stadium – \$250 million
- Palm Island Primary Health Care Centre – \$16.5 million
- Port of Townsville – \$27.3 million
- Townsville Channel Capacity upgrade – \$44.3 million
- Townsville Hospital expansion – \$334 million
- Oonoonba Priority Development Area – \$135.2 million.

1 Reporting within this document for the Townsville region is based on the following Statistical Area 3 (SA3) regions: Charters Towers- Ayr – Ingham, and Townsville.

2 QGSO population projections 2018 edition (medium series), Queensland Treasury employment projections 2016 (medium series) place of work - data sets adjusted to align with this region

3 Employment projections are based on the 2015 edition; the data set has been adjusted to 2016.

4 This project was based on the Townsville SA4 region.

5 Jobs Queensland: The Future of Work in Queensland to 2030 Discussion Paper -2019

6 Jobs Queensland: Anticipating Future Skills: Jobs growth and alternative futures for Queensland to 2022

7 Sourced from Regional Action Plans (Queensland Budget 2018-19) and State Infrastructure Plan (Part B: Program – 2018 update)

Training infrastructure in Townsville

Within the Townsville region, there are seven TAFE sites at Pimlico, Bohle, Aitkenvale, Charters Towers, Palm Island, Burdekin, and Ingham.

Aitkenvale is a short-term leased space in Townsville that offers courses to the local community, specialising in aged care, community services, early childhood education and care, education support, nursing and first aid.

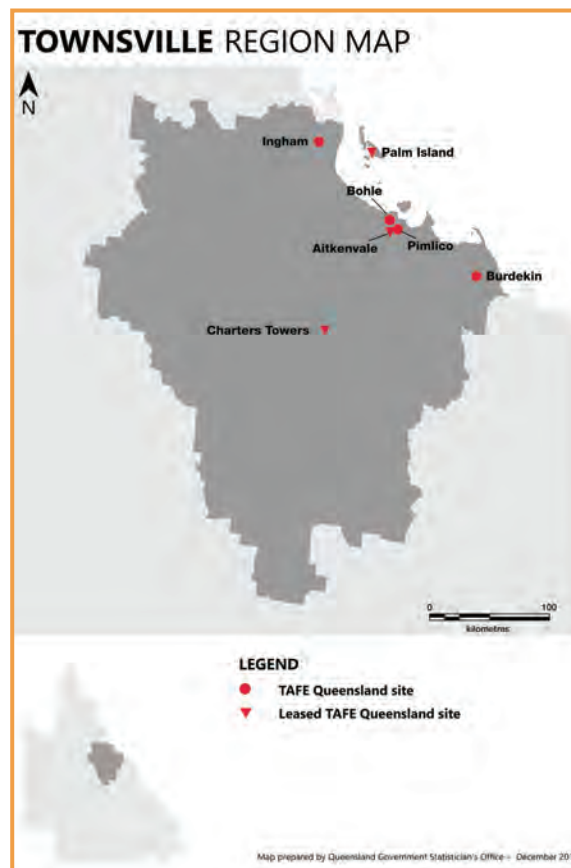
Bohle is a specialised training centre in Townsville, offering technical and trade training.

Burdekin is a training centre that offers technical and trade training.

Charters Towers is a learning hub that services the needs of remote communities in the region.

Ingham is a learning hub that offers courses relevant to the needs of the local community including early childhood education and care, as well as specialised first aid and CPR.

Palm Island is a learning hub that specialises in language, literacy and numeracy skills for education and employment, community services, and employment and training.



This map is intended for general reference use only



Pimlico is a full campus and the largest in the region. It offers a comprehensive range of study areas including aged care, business, childcare, community services, cookery, creative arts, English language studies, hairdressing and beauty, health, horticulture, hospitality, and information technology.

The region's training demand has seen general education and training remain high over the period from 2015–16 to 2017–18 and some increase in community services sectors over the same period, with all trade training offerings remaining steady. Enrolments in the region are forecast to grow marginally over the 10 years to 2027.

Aitkenvale

At the Aitkenvale TAFE learning hub, all students are enrolled in the industry area of community services. The leased space was opened in 2017 as a short-term solution to address the anticipated future demand in the region for community services training that the nearby Pimlico TAFE campus could not deliver at the time.



Future outlook

The leased space will continue to deliver training in specialist programs for the local community until the new building at Pimlico TAFE is open for use, at which time students are likely to transfer from Aitkenvale to Pimlico.

TAFE Queensland leases the site, and there are no associated maintenance or capital costs. Continued investment will be for modernisation of equipment and facilities.

Infrastructure plan: Aitkenvale

- TAFE Queensland leases the site and investment in the modernisation of equipment and facilities is proposed.

Charters Towers

The Charters Towers TAFE campus is a learning hub, which utilises the facilities at the Dalrymple Trade Training Centre. Courses available include engineering pathways and early childhood education and care.



Future outlook

The site has the flexibility to adapt to future needs of the local community and is considered fit-for-purpose. It is likely that non-trade training will remain the largest component of training delivery at this site.

TAFE Queensland leases the site, and there are no associated maintenance or capital costs. Continued investment will be for modernisation of equipment and facilities.

Infrastructure plan: Charters Towers

- TAFE Queensland leases the site and investment in the modernisation of equipment and facilities is proposed.

Bohle

The Bohle TAFE trade-training centre is located in Townsville's main industrial area and offers courses in a range of traditional trade areas including automotive, construction, electrotechnology, engineering, instrumentation, plumbing, and refrigeration.

It features a range of specialised facilities including a four-storey plumbing tower, fully fitted instrumentation laboratory, and state-of-the-art thermostatic mixing valves and backflow testing laboratory.



Future outlook

This campus is considered fit-for-purpose as a trade training centre to meet future demand.

The state government recently invested over \$1.5 million in the upgrades of the facilities, which included upgrades to ventilation in workshops and lighting. Over \$2.9 million is budgeted for capital and maintenance programs at this site over the next two years. Of this, up to \$1 million has been allocated for a feasibility study to investigate the suitability of the site to accommodate a new training hub for Renewable and Transition Energy training

In early 2019 the Department of State Development, Manufacturing, Infrastructure and Planning announced that a \$10 million manufacturing hub will be established at the Bohle TAFE campus. This will provide an opportunity to further develop existing partnerships with external groups and industry to support the expected growth in the region and campus.

Infrastructure plan: Bohle

- Over \$2.9 million is proposed for standard capital and maintenance programs at this site over the next two years to maintain the state-of-the-art facilities with up to \$1 million of this allocated toward a feasibility study for a potential future Renewable and Transition Energy Training Centre.



Burdekin

The Burdekin TAFE campus is located within the town of Home Hill. Study areas include trade and non-trade training in areas such as early childhood education and care, first aid, hairdressing, and engineering courses specialising in mechanical trades, fitting and turning, boiler-making, and metal fabrication.



Future outlook

The campus has the capacity to manage future training demand, however investment is needed to modernise the training facilities – particularly for trade training considering enrolments in the industry areas of engineering and automotive.

Approximately \$500,000 was invested in capital and maintenance in recent years, which included condition-based maintenance. An additional \$850,000 is forecast for investment over the next two years for maintenance and refurbishment works. These works will establish a student-industry collaborative learning centre to support early childhood education and community services training. Refurbishment would include modernisation of the trade facilities to reenergise the local skill base for the engineering industry.

Infrastructure plan: Burdekin

- \$850,000 is forecast for investment over the next two years for maintenance and refurbishment works to establish a student-industry collaborative learning centre to support early childhood education and community services training and to modernise trade facilities to reenergise the local skill base for the engineering industry.



Palm Island

The Palm Island TAFE campus is a learning hub that plays an important role in the local community and offers courses designed to meet the needs of the islands' residents. Available study areas include cooking classes, early childhood education and care, and the Queensland Certificate of Education.

In the last two years, this campus received statutory maintenance investment of approximately \$270,000.

This campus takes advantage of opportunities to build on existing partnerships with external and government groups and agencies. An example of this is the Department of Education's RATEP partnership, a Diploma of Education offered at this campus is equal to first year of the James Cook University Bachelor of Education and is offered to successful applicants who complete an assessment.



Future outlook

The campus has capacity to manage the expected growth and will continue to deliver training specific to the community's needs. The campus will be revitalised in the coming years to ensure that the training is delivered in a modern flexible learning environment.

Approximately \$75,000 will be invested in the site over the next two years for general maintenance as well as up to \$135,000 for modernisation of the outdated campus.

Infrastructure plan: Palm Island

- Approximately \$75,000 will be invested in the site over the next two years for general maintenance as well as up to \$135,000 for modernisation of the outdated campus.



Ingham

The Ingham TAFE campus offers introductory and advanced courses relevant to the needs of the local community including early childhood education and care, specialised first aid and CPR. The relatively small learning hub currently also specialises in trade training for the industry area of utilities, and general education and training.

Approximately \$235,000 was invested in standard maintenance in recent years.



Future outlook

The campus has capacity to manage the expected growth and there are opportunities to invest in the modernisation of the campus.

\$135,000 is proposed for general capital and maintenance programs at this site over the next two years. Utilities training will remain the focus at this facility.

Infrastructure plan: Ingham

- \$135,000 is proposed for general capital and maintenance programs at this site over the next two years.

Pimlico

The Pimlico TAFE campus is the only full campus in the region, which is positioned as a key regional delivery facility for non-trade training, to complement the Bohle TAFE trade training centre. The site is situated in an area of projected growing training demand, approximately five kilometres south-west of Townsville CBD.

The Queensland Government recently entered into a two-year licence with the Mater Health Service North Queensland to facilitate the development of a temporary car park of around 380 parking bays.

The Pimlico TAFE campus has a number of older buildings that have reached the end of their functional life and are in poor condition. Many of the buildings are former trades' facilities, creating opportunities for revitalisation and better site utilisation.



Future outlook

The site will continue to provide non-trade training with a focus on general education and training, community services, hospitality, cookery, hair and beauty, and health, reflective of the growth industries in Townsville city area.



Artist impression of new D Block at Pimlico TAFE campus



The Queensland Government has committed a significant investment of more than \$35 million to position Pimlico as a contemporary non-trades training delivery campus. A new building is under construction, and the redeveloped campus is expected to accommodate an additional 900 students for future training growth with improvements resulting in enhanced TAFE Queensland service to non-trade training students. The planned works will reduce significant maintenance costs in the future, with the new buildings to be 'green built' providing solar power solutions and enhanced airflow facilitation. More than \$815,000 is budgeted for planned maintenance works at this site over the next two years to complement the major revitalisation project.

Once construction is complete (mid -2020) all TAFE Queensland operations are likely to be consolidated within the south-east portion of the site. The remaining land may not be required for training purposes and the potential for other government agencies to utilise the site is currently being assessed. If appropriate, the surplus land could be transferred for government re-use.

The campus is adjoined by the NRL Cowboys House, which operates an accommodation program to support the education and training of indigenous youth. The Pimlico State High School and the Mater Hospital Pimlico are within 500 metres of the campus, and there are significant opportunities to continue developing these existing relationships.

Infrastructure plan: Pimlico

- The Queensland Government has committed more than \$35 million (including GST) at this site to position Pimlico as a contemporary non-trades training delivery campus. Works commenced in late 2018 are due to be complete by mid-2020.
- More than \$815,000 is budgeted for planned maintenance works at this site over the next two years to complement these works.

Townsville training infrastructure plan

Training demand in the Townsville region will increase over the next ten years and as a result, the Queensland Government has made a commitment for significant investment at the Pimlico TAFE campus, with the redevelopment due to be completed in mid-2020.

The State Government will continue to make significant investments in the region over the next two years on both maintenance and modernising of training facilities, including the major revitalisation project at the Pimlico TAFE campus.

The current regional training infrastructure footprint is well placed to service demand.

The Townsville region training requirements will be well serviced through the upgrades of the Pimlico TAFE campus in providing modern training facilities for non-trade training delivery, while traditional and specialised trade training will continue at the Bohle TAFE trade training centre.

Rural and remote communities will continue to be serviced by the Ingham, Palm Island, and Charters Towers TAFE sites. The Burdekin TAFE training centre remains an important location for TAFE Queensland and additional site planning will determine areas for future targeted investment.

Summary of planned actions

In the short to medium term, training infrastructure in the region will maintain its current emphasis.

Aitkenvale

- TAFE Queensland leases the site and will continue to deliver training in specialist programs for the local community until the new building at Pimlico TAFE is open for use, at which time students are likely to transfer from Aitkenvale to Pimlico.

Bohle

- This campus is considered fit for purpose as a trade training centre to meet future demand.
- Over \$2.9 million is proposed for standard capital and maintenance programs at this site over the next two years to maintain the state-of-the-art facilities with up to \$1 million of this budget allocated toward a feasibility study for a new Renewable and Transition Energy Training Centre.

Burdekin

- The campus has the capacity to manage future training demand, however investment is needed to modernise the training facilities particularly for trade training.
- \$850,000 is forecast for investment over the next two years for maintenance and refurbishment works to establish a student-industry collaborative learning centre to support early childhood education and community services training and to modernise trade facilities to reenergise the local skill base for the engineering industry.

Charters Towers

- TAFE Queensland leases the site and investment in the modernisation of equipment and facilities is proposed.

Ingham

- The campus has the capacity to manage the expected growth with Utilities training likely to remain the focus. There are opportunities to invest in the modernisation of the campus.
- \$135,000 is proposed for general capital and maintenance programs at this site over the next two years.

Palm Island

- The campus has the capacity to manage the expected growth and will be revitalised in the coming years to provide a modern flexible learning environment.
- Approximately \$75,000 will be invested in the site over the next two years for general maintenance as well as up to \$135,000 for modernisation of the outdated campus.

Pimlico

- The site will continue to provide non-trade training with a focus on general education and training, community services, hospitality, cookery, hair and beauty, and health, reflective of the growth industries in Townsville city area.
- The Queensland Government has committed to investing more than \$35 million (including GST) at this site for major revitalisation works including a new building, furniture and equipment. Construction works commenced in late 2018 and are due to be complete by mid-2020.
- More than \$815,000 is budgeted for planned maintenance works at this site over the next two years.
- Any land identified as surplus to training delivery may be appropriate for strategic government re-use.

desbt.qld.gov.au

Department of Employment, Small Business and Training

PO Box 15033

City East, Brisbane QLD 4002

Telephone: 13 QGOV (13 74 68)

Email: info@desbt.qld.gov.au